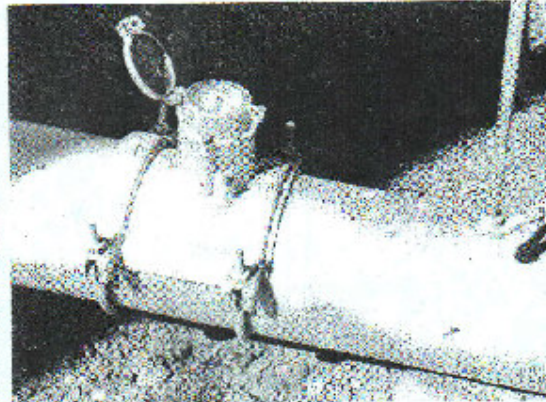


Bulletin 113-4
April 1986



State of California
The Resources Agency
Department of
Water Resources

Crop Water Use in California



Gordon K. Van Vleet
Secretary for Resources
The Resources Agency

George Deukmejian
Governor
State of California

David N. Kennedy
Director
Department of Water Resources

Table 1. Estimated 1980 County Average Unit Applied Water^{1/}
(acre-feet per acre)

County	Grain	Wheat	Cotton	Sugar Beets	Corn	Other Field	Alfalfa	Pasture	Forages	Other Truck	Almond	Other Nuts/Oils	Citrus	Other
Alameda	0.7					2.4	4.1	4.3		2.6		3.5		2.1
Alpine								4.8						
Amador				4.0	2.7	2.2		5.3						3.0
Butte	1.1	7.5			3.1	2.8	4.8	3.7		2.7	2.4	3.7	2.2	3.4
Calaveras								5.9						
Colusa	0.9	8.1		4.1	3.1	3.1	5.8	6.0	3.6	2.7		3.7		3.3
Contra Costa	1.2			4.1	3.2	2.4	4.0	5.0	2.9	2.7		3.7		2.9
Del Norte								1.8		1.0				
El Dorado								4.3				1.8		
Fresno	1.2	6.3	3.7	3.0	3.5	2.5	4.3	6.0	3.3	1.9	2.7	3.7	2.0	3.4
Glenn	0.5	8.5		4.0	3.1	3.1	5.6	5.6	3.0	2.2	2.6	3.7	2.8	3.3
Humboldt							1.6	1.8		1.0				
Imperial	3.6					4.8	6.5	7.9		2.3			5.5	
Inyo							7.2	7.2						
Kern	2.2	6.7	2.7	2.9	3.1	2.7	5.1	7.0	3.3	2.0	3.1	1.3	3.0	3.1
Kings	1.1	6.7	3.7	3.8	3.5	3.1	4.3	6.2	3.3	1.5	2.9	4.0	2.9	3.4
Lake							3.7	4.7				2.1		2.3
Lassen	1.9				2.7		3.7	3.5						
Los Angeles	0.5					3.7	6.5	7.2		2.5		4.0		
Madera	1.2		3.8	3.7	3.5	2.4	5.1	6.5	3.3	2.1	2.5	3.0	2.5	3.0
Marin														
Mariposa								4.0						
Mendocino								3.0				2.0		0.9
Merced	1.1	6.7	3.7	3.7	3.5	2.6	4.8	6.7	3.0	2.1	2.6	3.5	3.0	3.5
Monterey								4.3						
Napa				3.5		2.2	3.9	3.5	2.4	2.1		2.0		1.4
Nevada								4.0						1.2
Orange								4.2				1.4		
Placer	1.4	7.4				2.4		4.8					2.4	
Plumas	0.5						3.0	3.5				4.8		
Riverside	0.4					3.7	4.4	5.3		2.8		3.2	2.3	2.1
Sacramento	2.8					3.5	5.5	9.2		3.0		5.0	3.8	4.7
Shasta	1.2	7.2		3.5	3.2	1.0	4.2	5.0	3.1	2.0		3.7		2.8
San Benito				2.1		1.5	3.2	3.4	2.3	2.5		1.5		1.3
San Bernardino	0.5					3.0	4.0	5.6				3.5	2.1	2.3
San Diego	0.3					2.3	3.7	4.2		2.5		2.5	2.1	1.7
San Francisco														
San Joaquin	1.1	6.7		3.1	3.2	2.2	4.1	4.8	3.0	2.5	2.4	3.0		2.7
San Luis Obispo	0.6					2.1	2.7	3.6	1.8			3.2	2.0	1.3
San Mateo										2.3				
Santa Barbara	0.6					2.2	3.4	3.3		2.3		2.7	2.0	1.2
Santa Clara	0.3					2.5		2.7		2.5		2.7		1.2
Santa Cruz								2.7		1.6		1.8		
Stanislaus	1.3					3.0	3.5	6.2		2.3				
Stearns								3.0						
Sutter	1.5					2.1	3.7	3.3		2.0				
Tulare	1.5			3.8	3.2	1.8	4.3	5.2	3.1	2.1		3.1		1.7
Tuolumne						2.8		3.6				1.8		1.0
Yuba	1.1	6.7		3.0	3.6	2.3	4.9	6.0	3.3	3.2	2.7	4.0	2.4	3.5
Yavapai	0.5	7.8				2.5	3.2	3.0	3.5	2.1	2.8	3.7		
Yavapai	0.9	5.8		4.0		2.5	3.8	6.6		2.2	2.1	3.7	2.6	3.4
Yimby								3.0						
Yuba	1.4	6.7	3.1	2.7	3.5	2.7	5.1	6.5	2.9	2.1	2.7	4.2	2.3	3.8
Yuba														
Yuba	0.5					2.0	4.4	5.4		2.5		3.5	2.5	1.7
Yuba	1.3	7.4		3.8	3.2	2.0	4.3	5.2	3.1	2.4		3.7		2.5
Yuba	1.4	7.4				2.7	5.4	5.0		2.0		3.2		2.5

^{1/}Based on Department of Water Resources Bulletin 160-83, "The California Water Plan - Projected Use and Available Water Supplies to 2010," December 1983.

^{2/}See text for comments on recent trends of significant decreases in values for some areas.

^{3/}Includes areas with less than full season supply.

^{4/}Upper value is for coastal drainage portion of county; lower value is for the desert portion.