

DJN R Ex 16

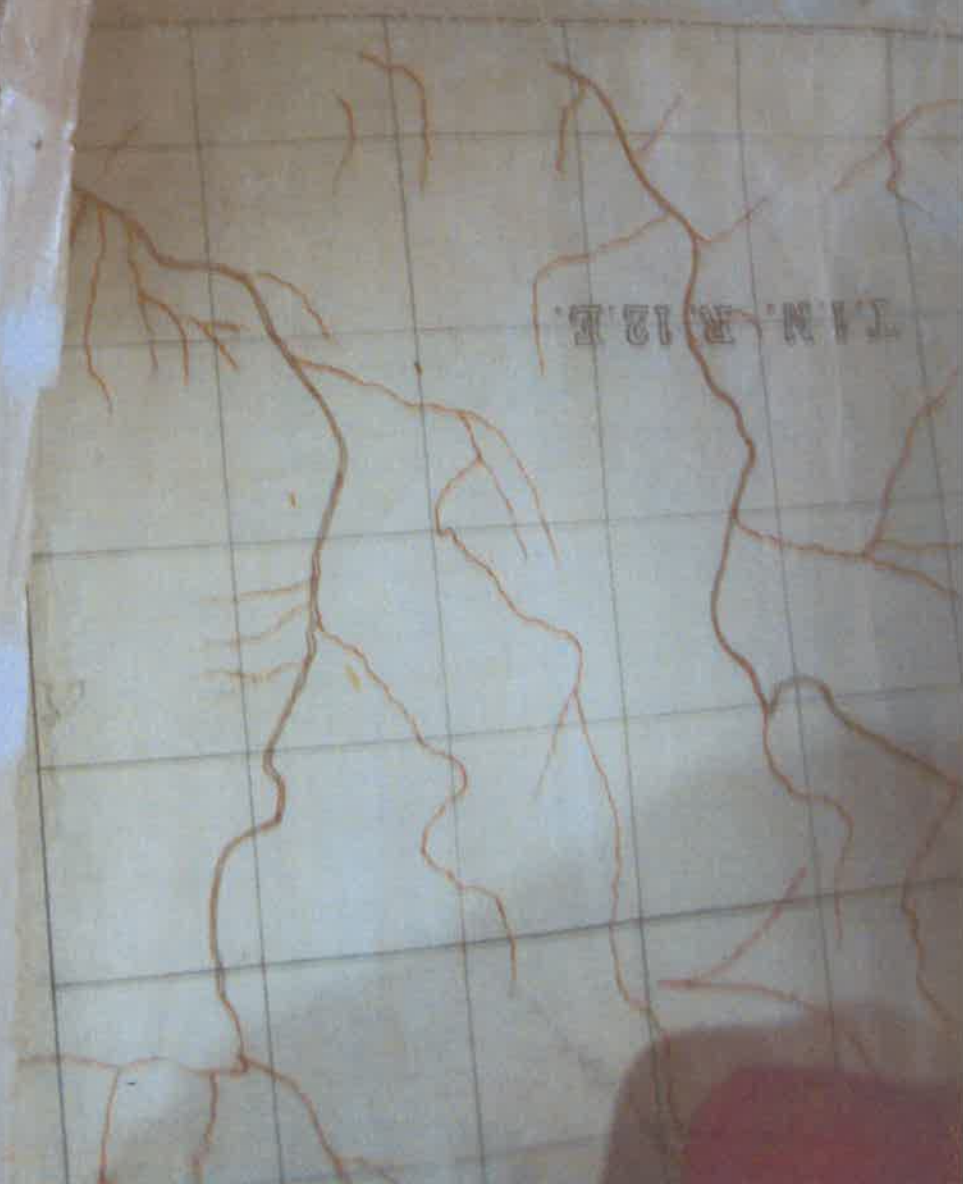
Cerand Island - Base to the Standard North

81-0625

RANCHO DEL RIO ESTANISLA

JAN. 12. 1885

5292



---

## Inventory of the William Hammond Hall Papers, 1878-1907

Processed by Jenan Shabbas; supplementary encoding and revision supplied by Xiuzhi Zhou.

California State Archives

1020 "O" Street

Sacramento, California 95814

Phone: (916) 653-2246

Fax: (916) 653-7363

Email: [ArchivesWeb@sos.ca.gov](mailto:ArchivesWeb@sos.ca.gov)

URL: <http://www.sos.ca.gov/archives/>

© 2000

California Secretary of State. All rights reserved.

## State Engineer--William Hammond Hall Papers

### Scope and Contents Note

Although William Hammond Hall served as State Engineer only until 1889, the Hall Papers cover the years 1878 to 1907 because the records were housed until 1991 as documents still in use by the Department of Water Resources (DWR) where they became somewhat intermingled with those of later time periods. The majority of the records, however, date to 1889, and only a few scattered reports, field books, and maps are from later time periods.

The record group has been broken into subgroups by type of records. These subgroups reflect the divisions apparent in the records when they were transferred from DWR. The subgroups are miscellaneous working papers, field books, and maps.

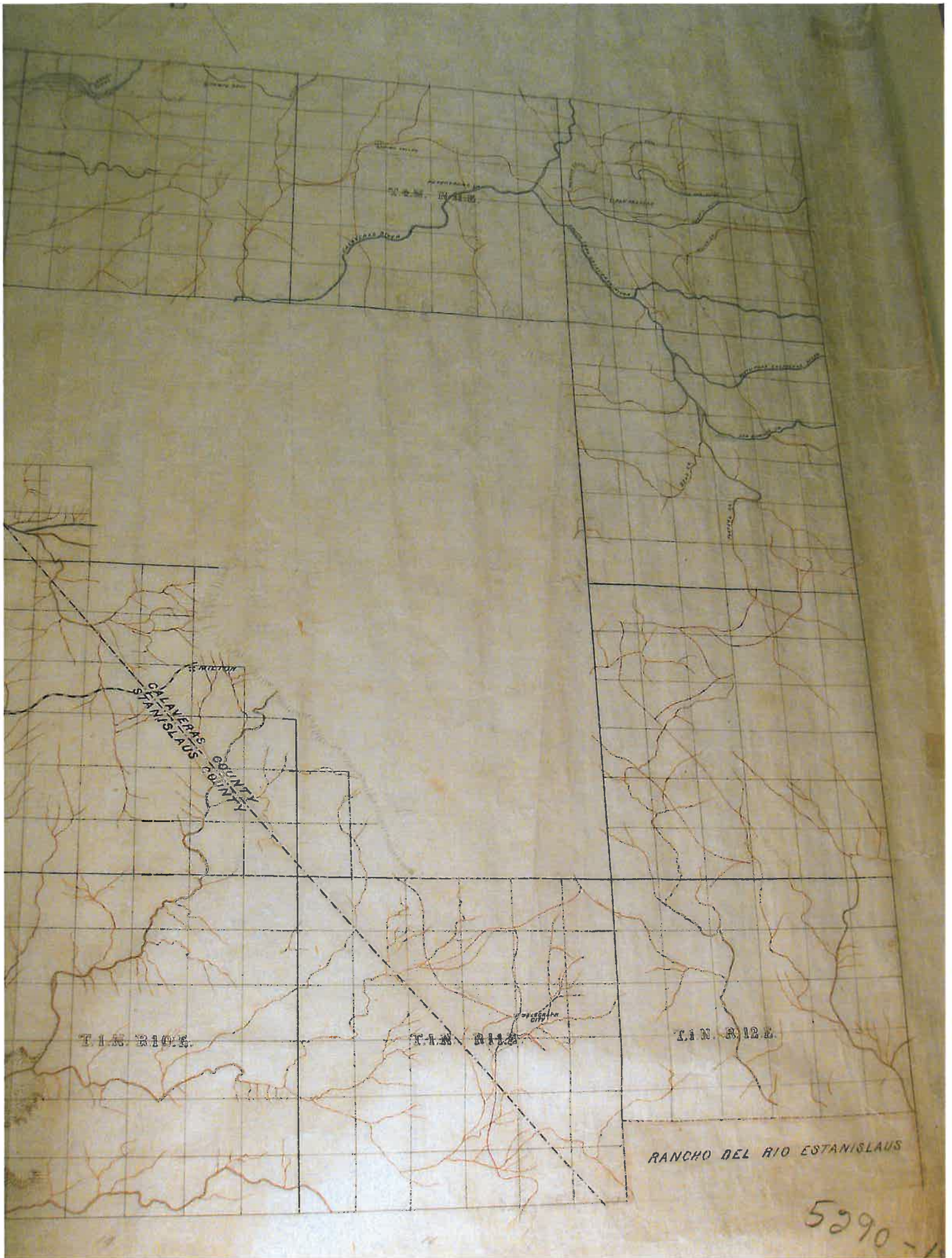
The majority of this record group is made up of the field books, covering the years 1878 to 1907, which were kept by Hall and his assistants as they gathered technical information on California's water systems. The field books cover various regions throughout the state, primarily, but not limited to, Southern California and the Central Valley. The books include notes, statistics, residents' observations, charts, tables, and miscellaneous diary entries. They also contain information still valued today relating to water rights and property ownership.

The miscellaneous working papers, which arrived in no discernible order, had largely been left untouched since Hall's time. These records are primarily reports and various supporting data compiled for inclusion or use in Hall's irrigation studies. Of these studies, Hall was only appropriated funds to publish two volumes, leaving the final two volumes he intended to produce unfinished. While some of the records in this subgroup include reports on Southern California, which was covered in volume two of Hall's work, the majority of these documents cover the Central Valley, which Hall had planned to address in the third volume. This subgroup has been arranged according to the subject covered by each report or supporting matter, such as canals and ditches, irrigation, rivers and watersheds, and rainfall, for example. Aside from the Canals and Ditches series, which is organized according to a preliminary table of contents found with the records, each subject series is then organized by type of document (reports, charts and tables, correspondence, newspaper clippings, etc.) and, where applicable, separated by region and arranged alphabetically.

The map subgroup, which includes 83 original maps and various duplicates, has been left in the arrangement in which it arrived from DWR. The numbering system is also DWR's. The maps are valuable tools in discerning what the state's water and irrigation systems were like during Hall's time. They provide the first extensive and comprehensive study of water in California conducted with strict scientific and technical methods. As such, they can provide researchers with immeasurable information, for they indicate not only watershed areas, drainage systems, and irrigation works, but also land ownership and land grants, soil classification, and crops.

Aside from the maps, all of the records in this record group are textual documents. Most of the written documents, apart from field books and charts and tables, are typed. There are also some handwritten copies/drafts of the reports.

| <u>Map #</u> | <u>Title</u>  | <u>Date</u> |
|--------------|---|-------------|
| 5290-10      | Cross-section of Calloway Canal   | ca. 1880s   |
| 5290-11      | Portion of San Joaquin and Kern River Canal   | ca. 1880s   |
| 5290-12      | San Joaquin River Soundings. Hills Ferry to Grayson Fall  | 1882        |
| 5290-13      | San Joaquin River. San Joaquin Bridge to Stockton Fall  | 1882        |
| 5290-14      | Tulare Lake-5th to 6th Standard South   | ca. 1880s   |
| 5290-15      | Sonoma and Marin Railroad Survey  | Mar 1875    |
| 5290-16      | Copy of Official Map of Santa Barbara County  | Mar 1878    |
| 5290-17      | Swampland Districts of Sacramento and Lower San Joaquin Valleys. Organized under legislation of 1861 and 1868 | ca. 1880s   |
| 5290-18      | Grand Island and Suisun Bay to Foothills and 1st Standard North   | ca. 1880s   |
| 5290-19      | East Boundary of Yolo County  | ca. 1880s   |
| 5290-20      | San Bernadino Map showing Acreage of Land Grants  | ca. 1880s   |
| 5290-21      | Map of Trinity County showing principle streams   | ca. 1880s   |
| 5290-22      | Map of Northern Railway and San Pablo and Tulare Railroads  | ca. 1880s   |
| 5290-22A     | San Pablo and Tulare Railroad-Martinez to Tracy   | ca. 1880s   |
| 5290-23      | Map of Tulare County showing property ownership   | ca. 1880s   |
| 5290-24      | Map of Cache Creek  | ca. 1880s   |
| 5290-25      | Part of Yuba and Nevada Counties  | ca. 1880s   |
| 5290-26      | California and Oregon Railroad north of Redding   | ca. 1880s   |
| 5290-27      | Soundings on Sacramento River from Courtland to Steamboat Slough  | 1878-1879   |
| 5290-27A     | Rough draft of soundings on Sacramento River from Courtland to Steamboat Slough                               | 1878-1879   |
| 5290-28      | Petaluma, Sonoma, Vacaville, and Clear Lake Railroad  | ca. 1880s   |



TIN RICE

TIN RICE

TIN RICE

RANCHO DEL RIO ESTANISLAUS

5290-1



RANCHO SANJON DE LOS MOLINEROS

TEN. RES.  
TEN. RES.  
TEN. RES.  
TEN. RES.  
TEN. RES.  
TEN. RES.  
TEN. RES.

RANCHO DEL CAMPO DE LOS FRANCISCO

SAN FRANCISCO

BASE LINE

