



Photo a: Kern River, First Point of Measurement (First Point) at controlled channel cross section and gaging station. Recorded flow rate of 508 cfs on 9/30/09.



Photo b: Kern River 1.0-1.25 mi. downstream of First Point. Channel supports riparian corridor, a variety of instream geomorphic conditions, and associated habitats.



Photo c: Kern River at entrance to Beardsley Canal. Gates pond river water to facilitate diversion to Beardsley Canal.



Photo d: Kern River at Manor Street looking upstream. River ponds behind gates at Riverview Park (Photo 10h) creating stagnant flow condition upstream of Manor Street. Note abundant growth of water primrose.

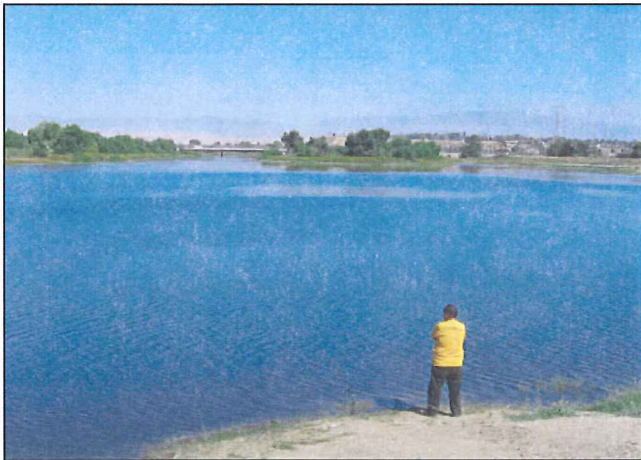


Photo e: Kern River at Riverview Park looking upstream toward Chester Ave. crossing. River water is ponded behind gates shown in Photo 10h.



Photo f: Gate at entrance to Calloway Canal.





Photo g: Diverted flows from Kern River enter Calloway Canal and flow down the canal.



Photo h: Looking south across ponded Kern River at Riverview Park toward main gate on mainstem Kern River (near ground) and gate for Carrier Canal (in distance).



Photo i: Carrier Canal just downstream of Four Weirs diversion station and west of Manor St.

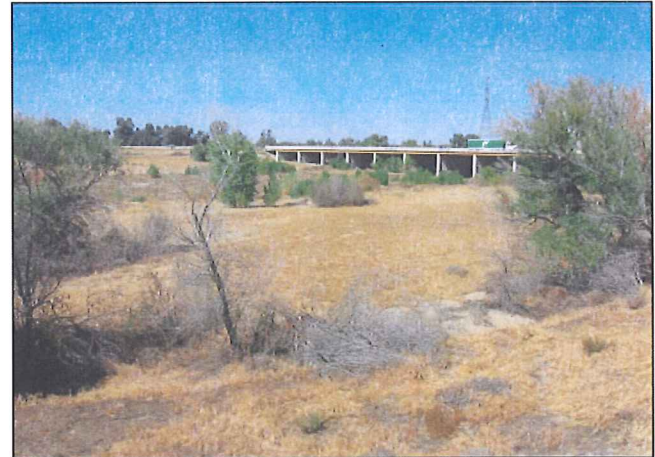


Photo j: Kern River at Hwy 204 crossing. Downstream of Calloway and Carrier Canals, the Kern River is dry at surface.

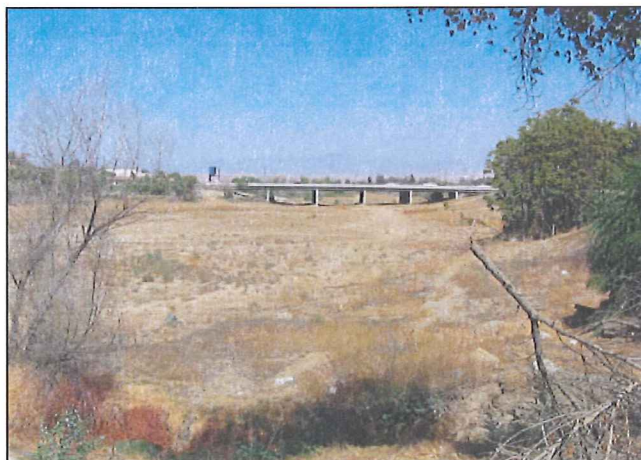


Photo k: Kern River looking upstream to Hwy 58 (Rosedale Hwy) crossing. Channel bed is dry and homogenous.



Photo l: Kern River upstream of Hwy 99 crossing. Dry channel bed, sand and gravel deposited upstream of crossing.





Photo m: Kern River looking downstream from Hwy 99 crossing. Sand and gravel bed channel is wide and dry, river channel sediment texture progressively fines moving downstream past crossings. Narrow vegetative margin along channel.



Photo n: Kern River looking upstream along Truxton Ave. Sand dominated dry river bed.



Photo o: Kern River looking downstream near Coffee Rd.



Photo p: Kern River looking upstream near Stockdale Hwy, channel bed becoming progressively sand dominated.



Photo q: Kern River at McClung Weir within 2800 acre recharge facility upstream of Second Point of Measurement.