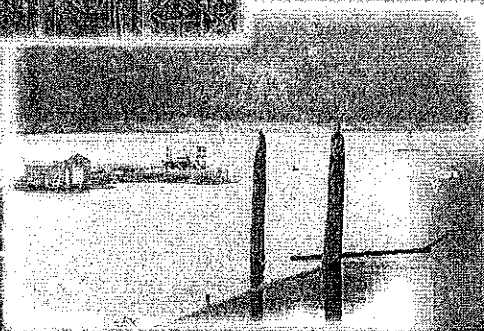
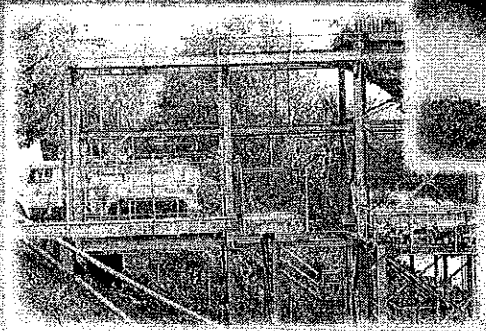
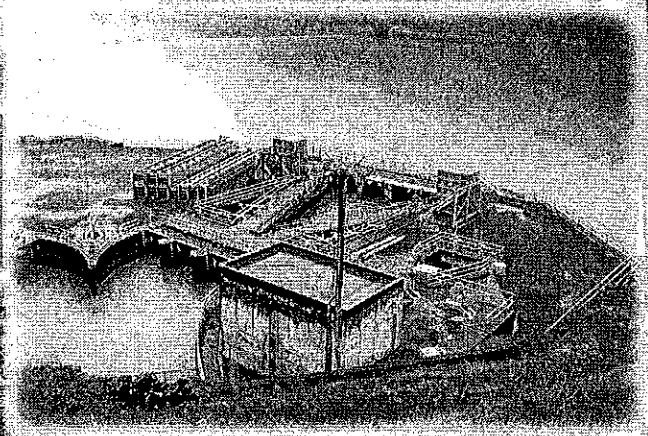
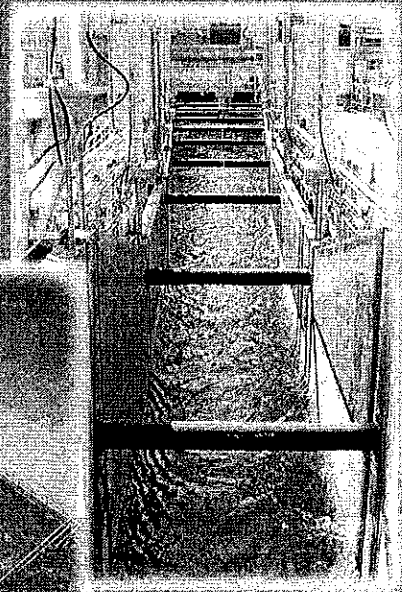
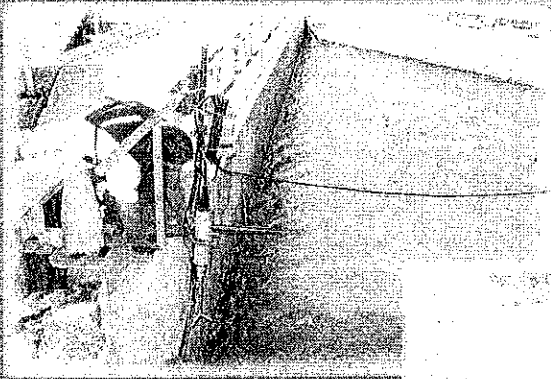


Introduction



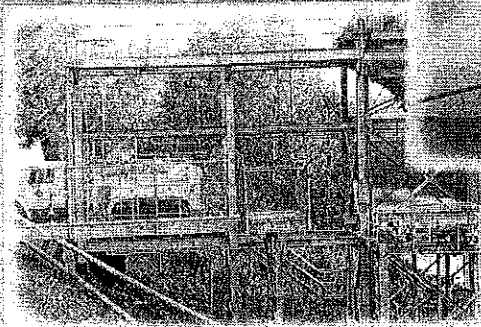
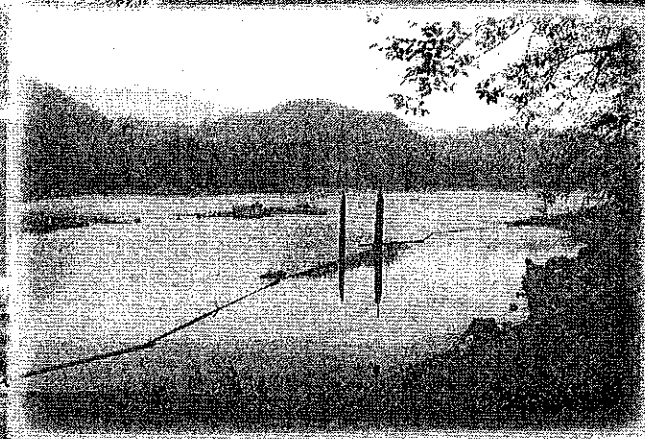
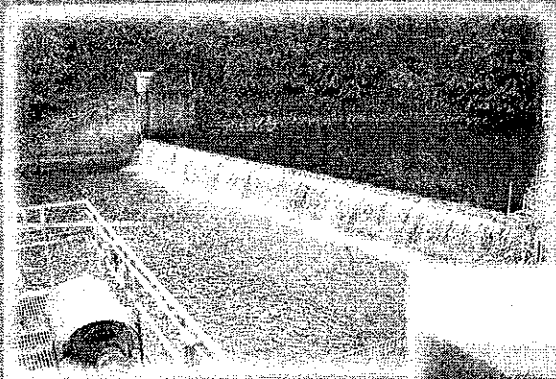
Adult Passage Options

- ☞ Fish Ladders
- ☞ Trap & Haul

Juvenile Passage Systems

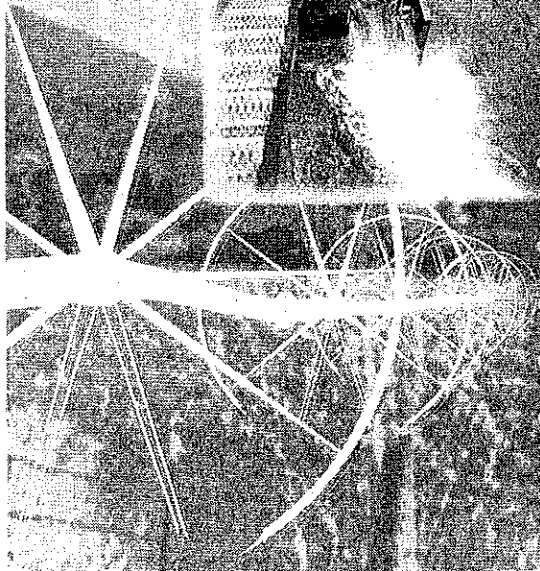
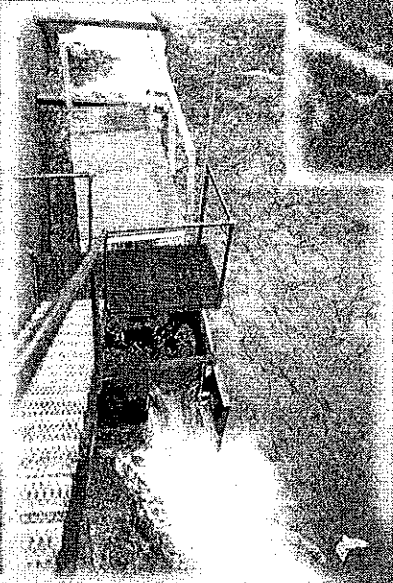
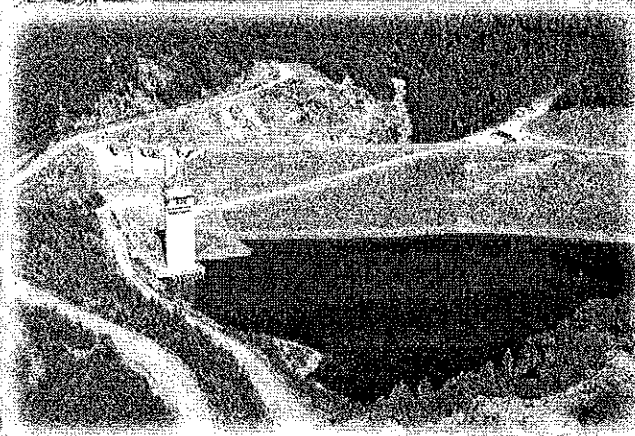
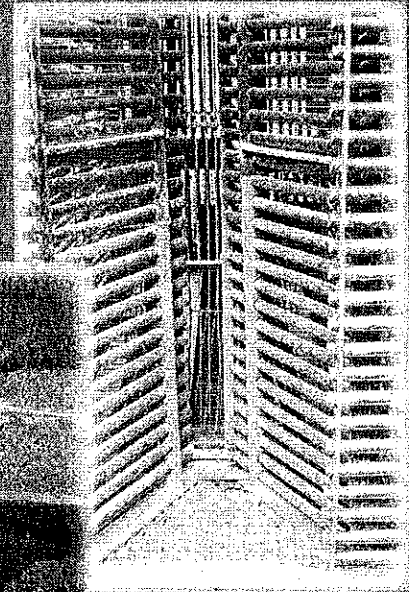
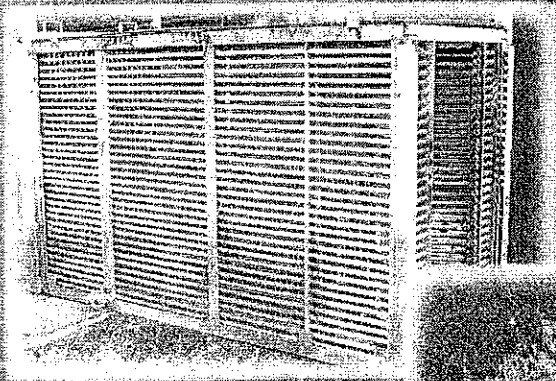
- ☞ Reservoir Outlets
- ☞ Floating Collectors
- ☞ Large Fixed Screens
- ☞ Louvered Intakes

Baker River System



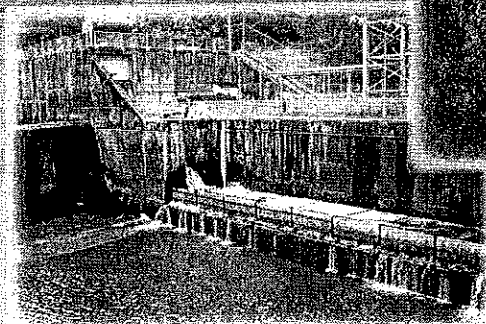
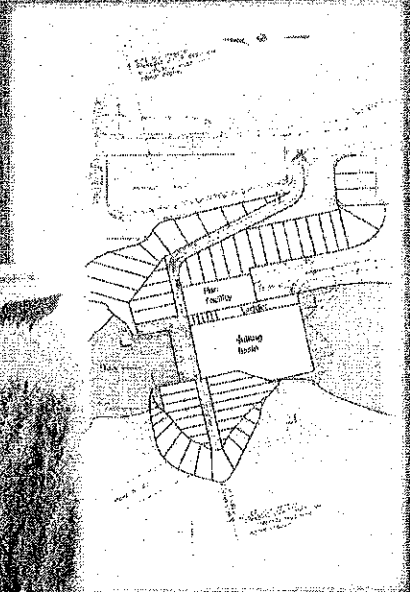
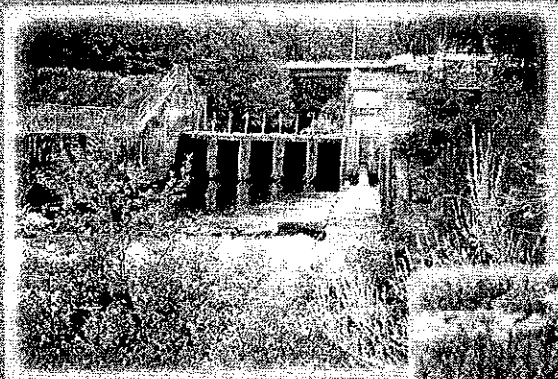
- Adult barrier dam & trap with 60 mile RT truck haul
- Juvenile floating collectors and guide nets with 40 mile RT truck haul
- Upper Baker Dam 312 ft high
- Lower Baker Dam 285 ft high
- Upper Baker juvenile collector 150 cfs capacity
- Lower Baker juvenile collector 90 cfs capacity
- 10,000 to 30,000 adult fish trucked per year
- 75,000 to 325,000 smolts trucked per year
- 2.5 FTE annual labor requirement

Green River System

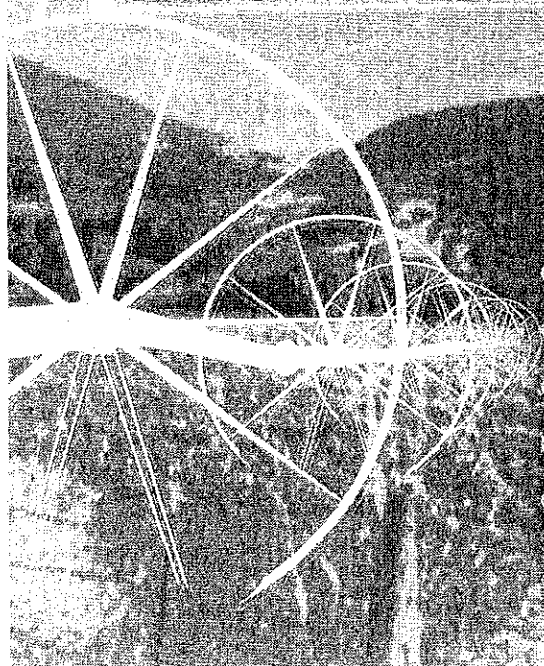


- Adult barrier dam & temporary trap with 30 mile RT truck haul
- Juvenile passage through reservoir outlet
- Howard Hanson Dam 235 ft high
- 10 to 150 adult wild steelhead trucked per year
- 0.3 FTE annual labor requirement

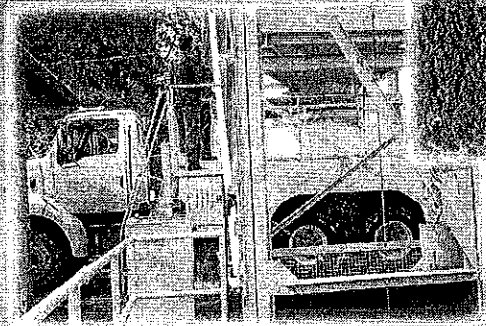
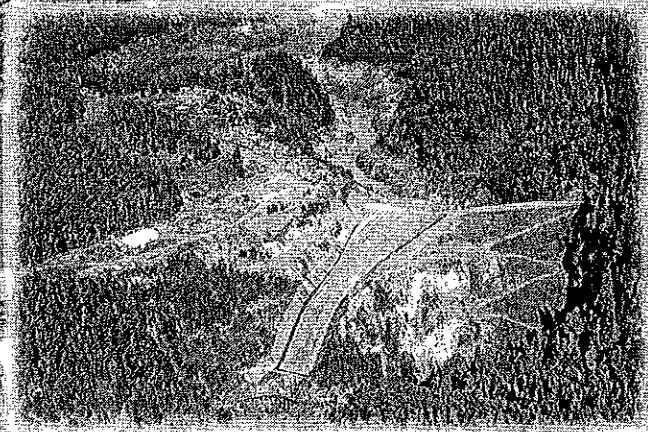
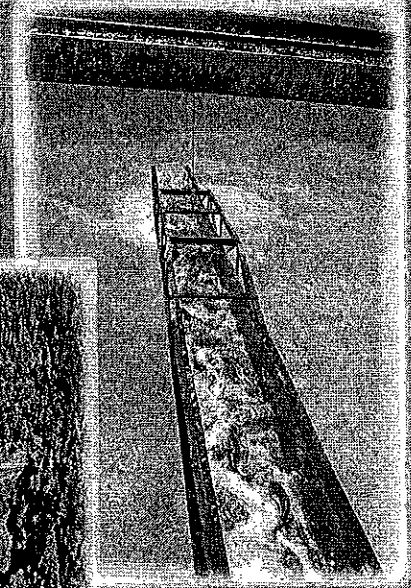
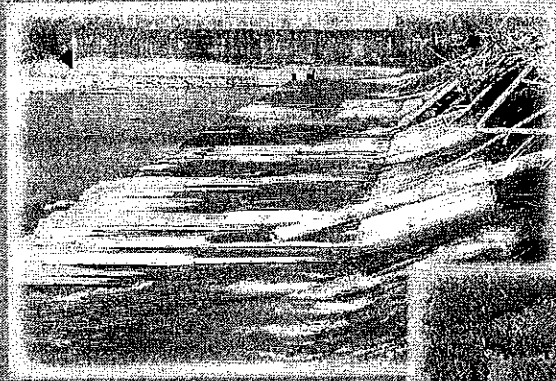
Wynoochee River System



- Adult barrier dam & trap with 20 mile RT truck haul
- Juvenile fixed port collectors 200 cfs capacity each
- Wynoochee Dam 175 ft high
- 1,000 to 6,000 adult fish trucked per year
- 0.5 FTE annual labor requirement

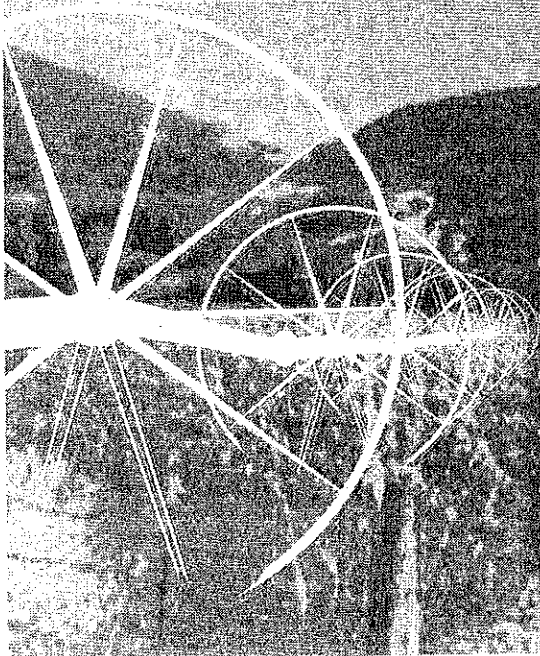
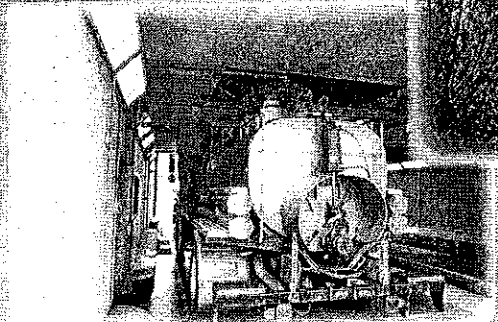
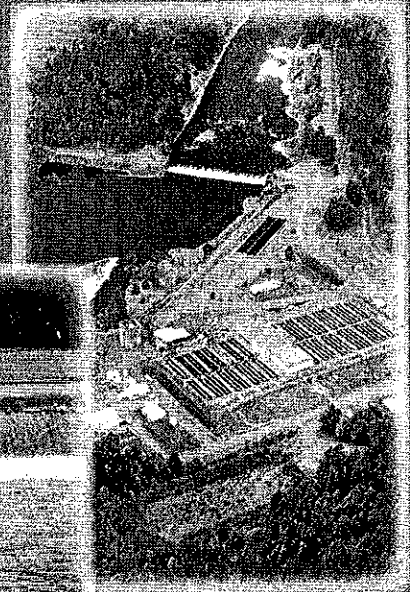
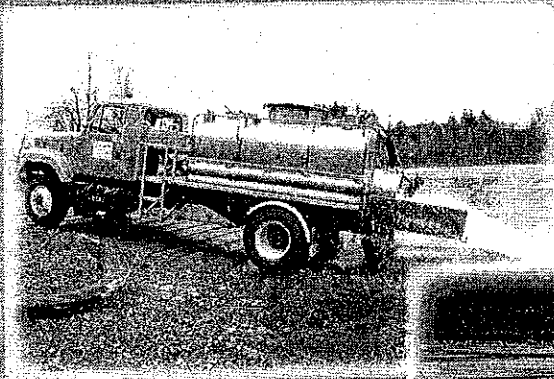


Mud Mountain System



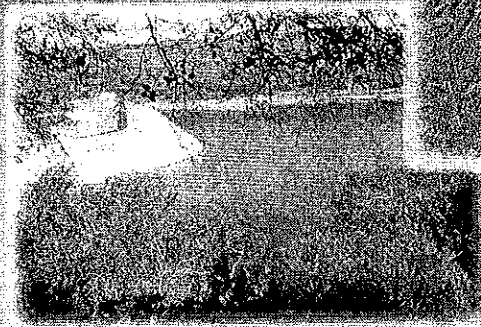
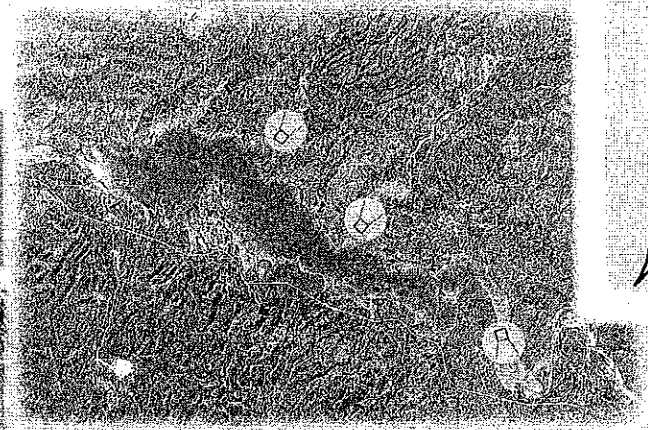
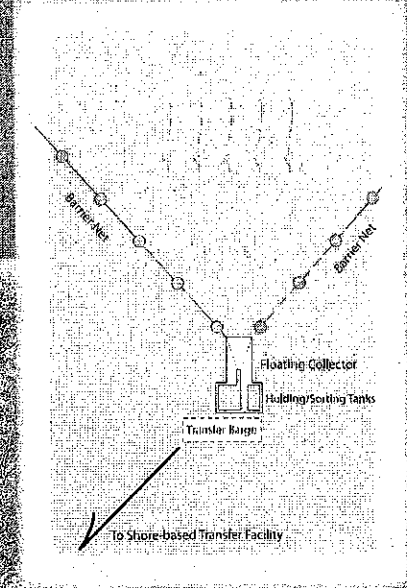
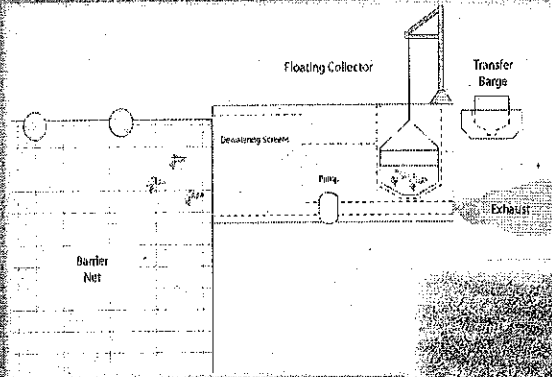
- Adult barrier dam & trap with 30 mile RT truck haul
- Juvenile passage through reservoir outlet
- Mud Mountain Dam 432 ft high
- 5,000 to 40,000 adult fish trucked per year
- 0.5 FTE annual labor requirement

Cowlitz River System



- Adult barrier dam & trap with 120 mile RT truck haul
- Juvenile fixed collector 30 cfs capacity with truck haul
- Mossyrock Dam 606 ft high, largest of 3 dam complex
- 30,000 to 140,000 adult fish trucked per year
- 750,000 to 3,500,000 smolts trucked per year
- 3.5 FTE annual labor requirement

Bradbury Dam



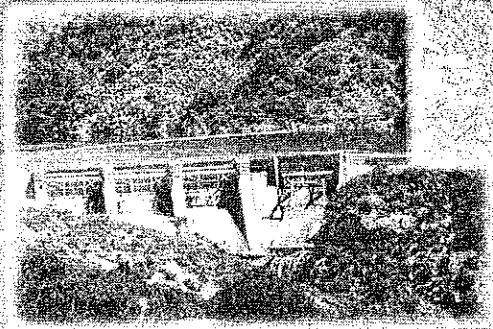
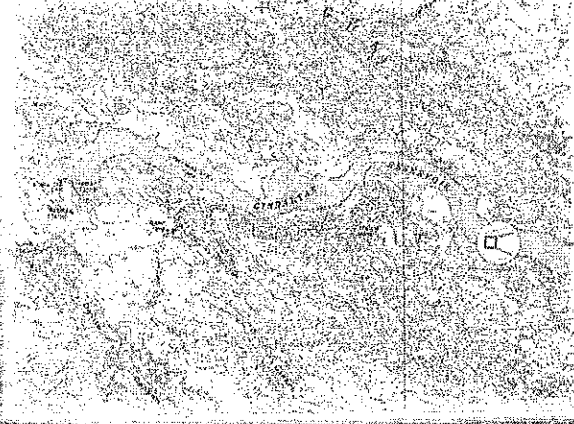
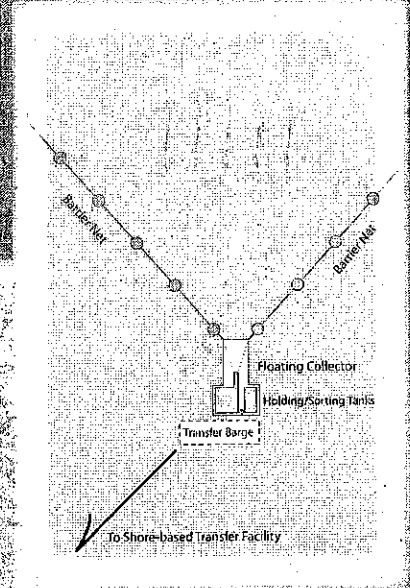
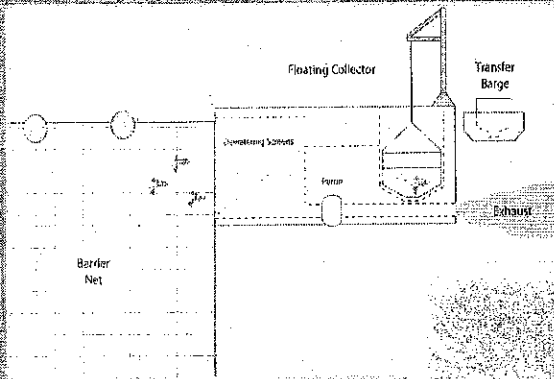
Adult Passage Options

- Temporary Trap & Haul
- Permanent Trap & Haul

Juvenile Passage Options

- Fixed Port Collectors at Dam w/ Pumpback
- Fixed Intake Collectors at Dam w/ Pumpback
- Floating Collectors at Dam w/ Pumpback
- Floating Collectors at Tributary Inlets w/ Pumpback
- Haul Downstream to Release Site

Gibraltar Dam



Adult Passage Options

- ☛ Temporary Trap & Haul
- ☛ Permanent Trap & Haul

Juvenile Passage Options

- ☛ Fixed Port Collectors at Dam w/ Pumpback
- ☛ Fixed Intake Collectors at Dam w/ Pumpback
- ☛ Floating Collectors at Dam w/ Pumpback
- ☛ Floating Collectors at Tributary Inlets w/ Pumpback
- ☛ Haul Downstream to Release Site