

SWRCB Bay Delta Water Quality Control Plan Phase I
Recirculated Draft SED Comments

U.S. Environmental Protection Agency



January 3, 2017

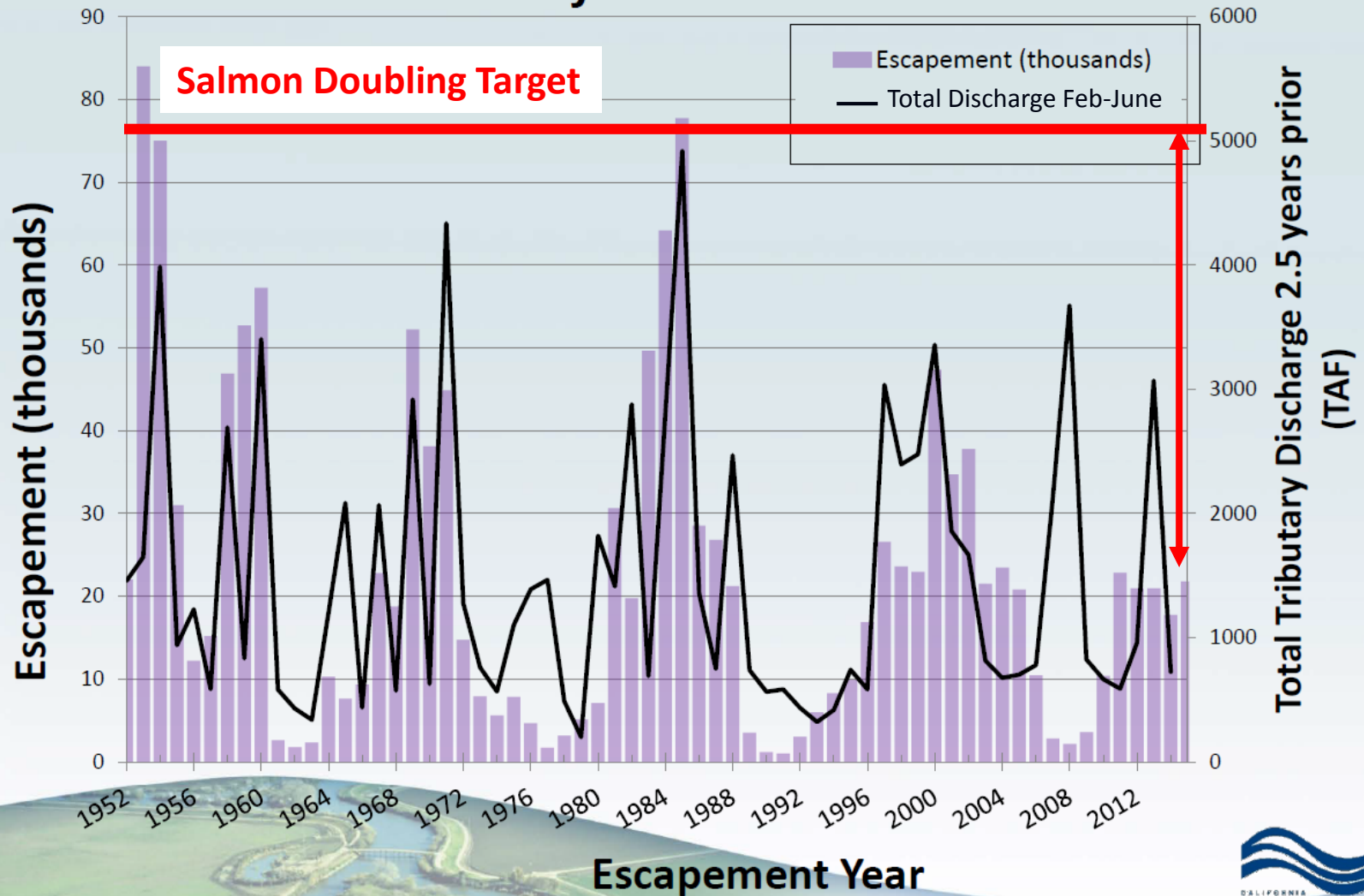
Clean Water Act & Beneficial Uses



Flow Standards to Protect Aquatic Life

Adult Salmon Returns and Flows Experienced by Juveniles

12



SED Figure 19-2

All Season Narrative Objective & Protection for Fish and Wildlife

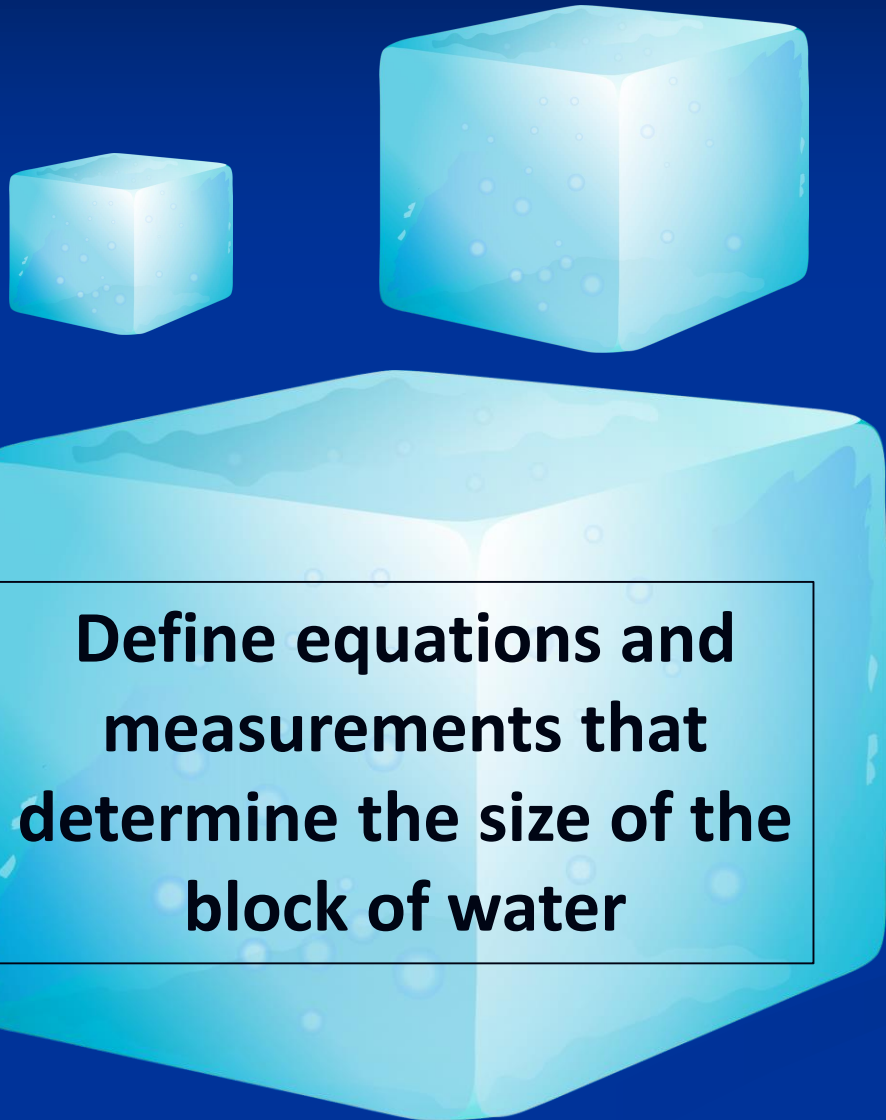
Table 7-4. Geographic and Seasonal Occurrence of Indicator Fish Species and Life Stages

Life Stage	Location	Jan	Feb	Mar	Apr	May	Jun	Jul	Aug	Sep	Oct	Nov	Dec
Central Valley fall-run Chinook salmon													
Adult migration	Bay-Delta, SJR and three eastside tributaries												
Spawning/incubation	Three eastside tributaries												
Juvenile rearing/emigration	Bay-Delta, SJR and three eastside tributaries												
Central Valley steelhead													
Adult migration	Bay-Delta, SJR and three eastside tributaries												
Spawning/incubation	Three eastside tributaries												
Juvenile rearing	Three eastside tributaries												
Juvenile emigration (age 1+)	Bay-Delta, SJR and three eastside tributaries												
Rainbow trout													
Adult migration (lake to stream)	New Melones, New Don Pedro, Lake McClure and Lake McSwain												
Spawning/incubation	Three eastside tributaries												
Juvenile rearing	Three eastside tributaries												
Largemouth bass													
Spawning/incubation	Bay-Delta, SJR and three eastside tributaries, and reservoirs												
Juvenile rearing to adult	Bay-Delta, SJR and three eastside tributaries, and reservoirs												
	Primary occurrence periods considered in impact assessment.												
	Non-primary occurrence period.												

Sources: Adapted from Rosenfield and Baxter 2007; Wang and Brown 1993; USFWS 1996; McEwan 2001; Moyle 2002; Hallock 1989; and USBR 2011.

Note: Federal ESA list accessed January 12, 2012; CDFW special status list accessed January 12, 2012.

Flow Standards and Success



Flow Standards & Success

- Starting % UF in the objective
- Biological goal for shifting % UF
- Flow range that promotes Delta survival
- Add % UF at Vernalis

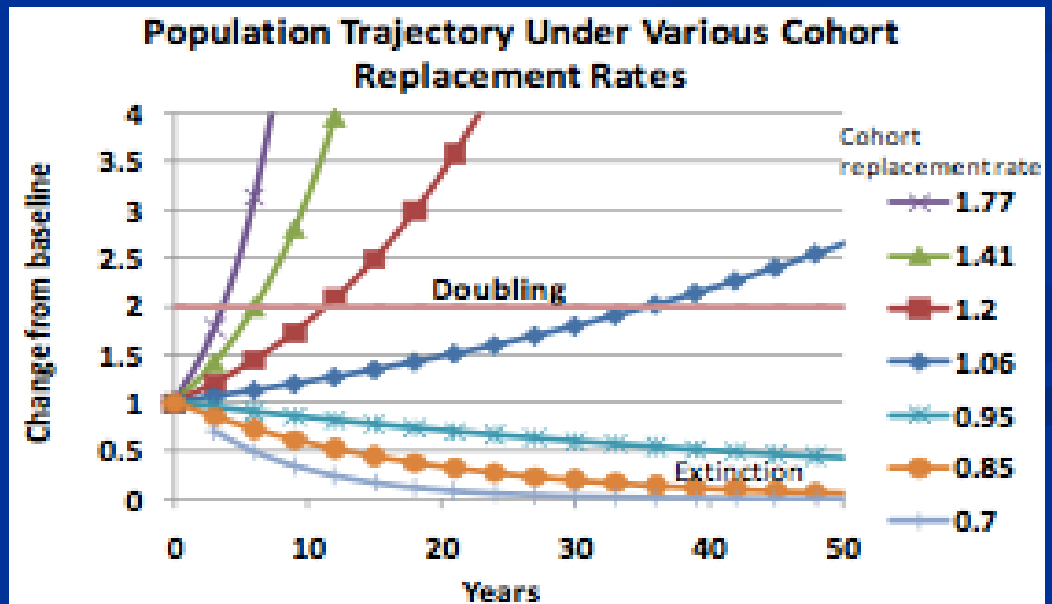
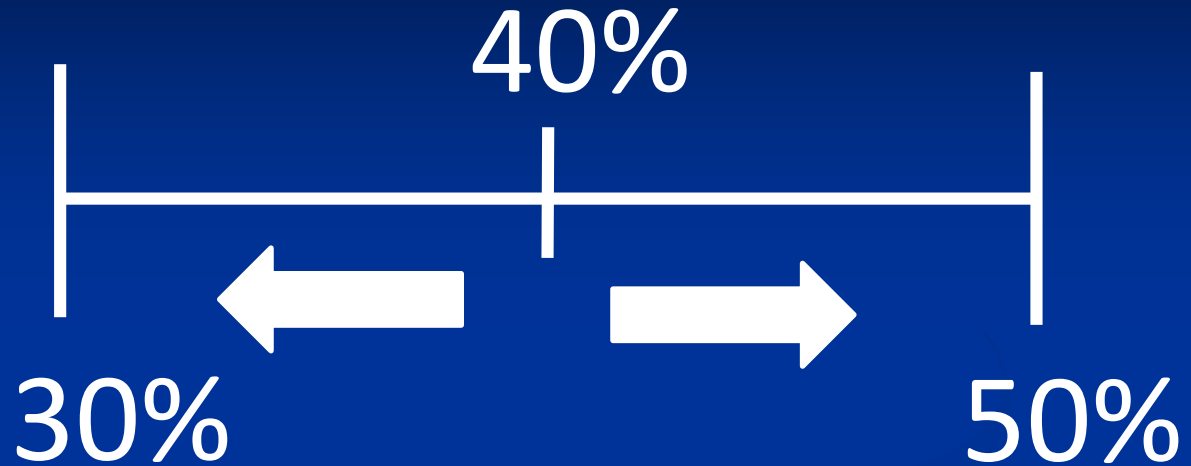
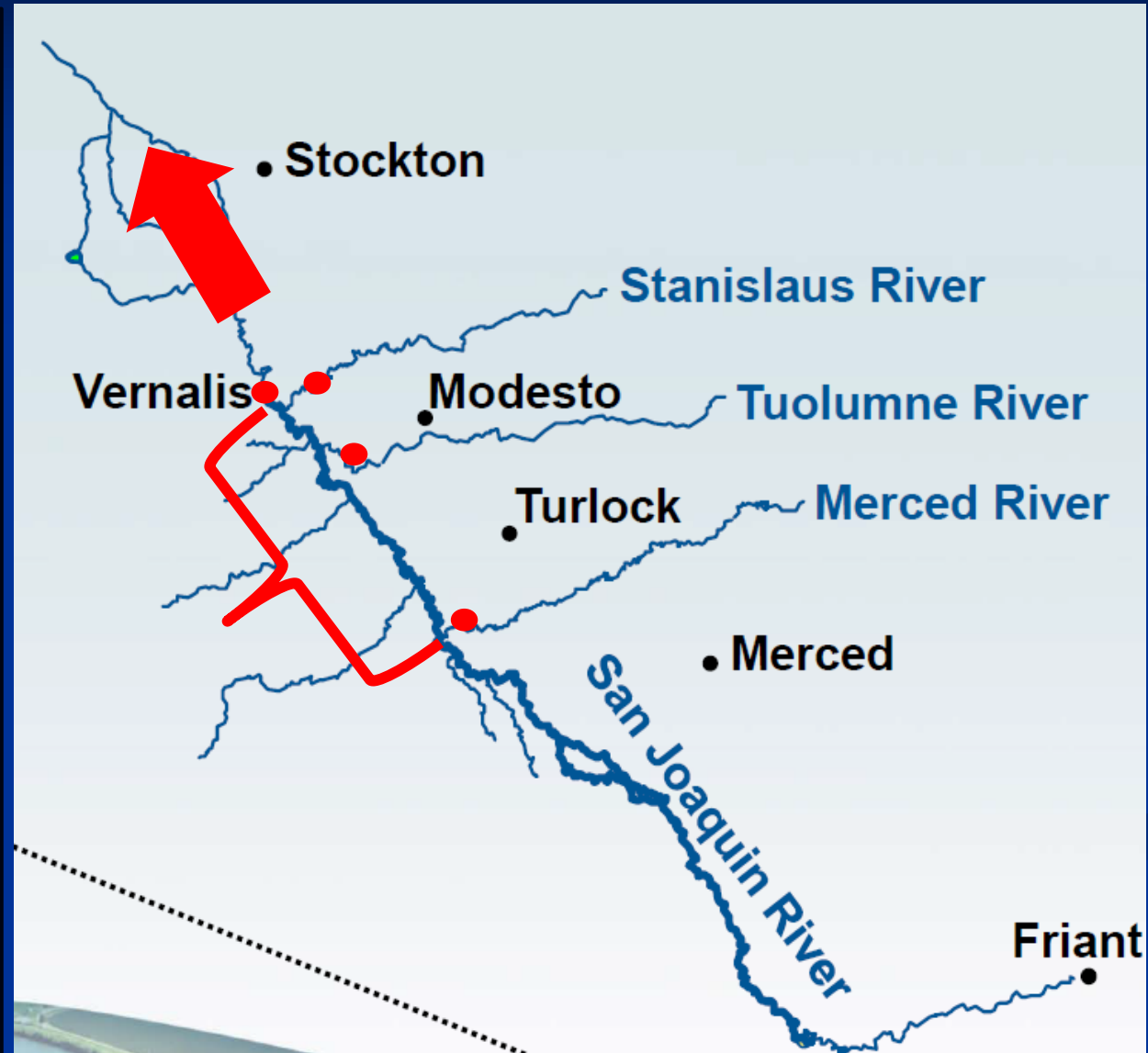


Figure from US DOI. 2011. Testimony to SWRCB. February 8, 2011

Flow Standards & Success

- Starting % UF in the objective
- Biological goal for shifting % UF
- Flow range that promotes Delta survival
- Add % UF at Vernalis



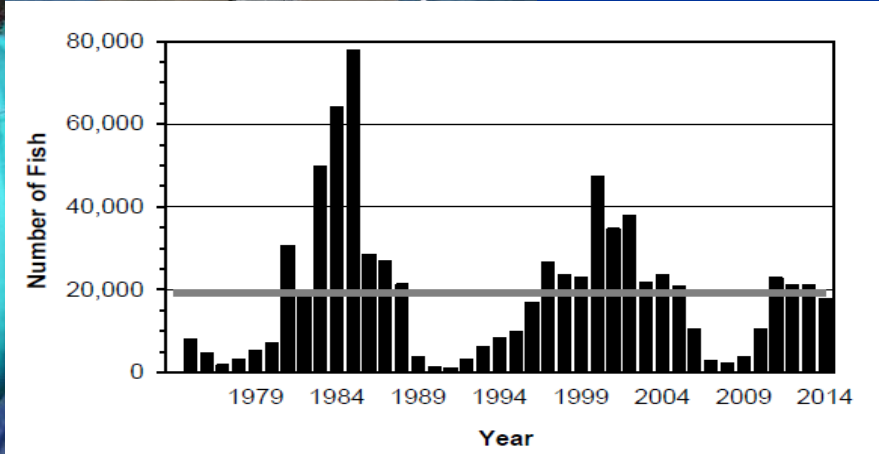
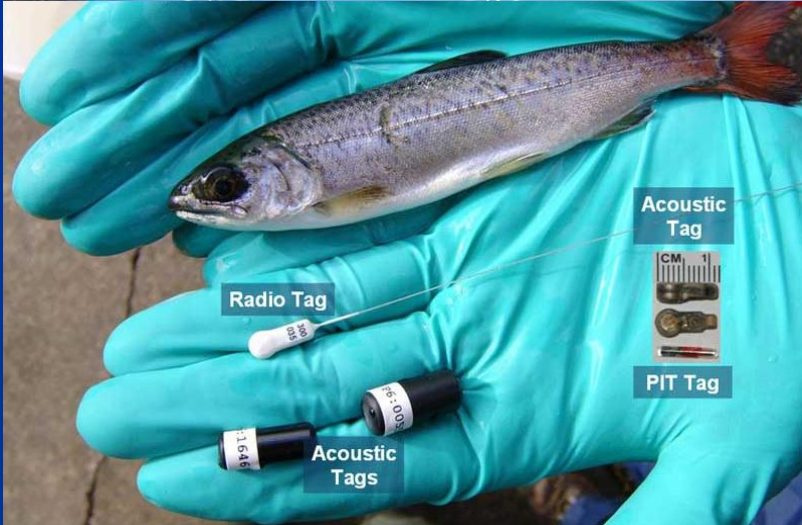
Adaptive Management

- **Define roles of working group participants**
- **Structure and function of decision-making processes**
- **Criteria to trigger management actions**
- **Targets for shaping flows within the range**

Monitoring, Assessment, and Science Program



Logos for the Delta Regional Monitoring Program (DELTA RMP) and the San Joaquin River Regional Water Quality Monitoring. The Delta RMP logo features a map of the Delta region and lists participating agencies: DWR, USBR, USFWS, SWRCB, DPH, USEPA, USACE, NMFS, and USGS. The San Joaquin River logo includes a stylized fish and the text "SAN JOAQUIN RIVER Regional Water Quality Monitoring".



SUMMARY

- Instream flows are needed to protect aquatic life uses all year
- Adopt standards that are
 - Well defined
 - Protect the beneficial use
- Identify structure and targets for adaptive management
- Establish Monitoring, Assessment, and Science Program