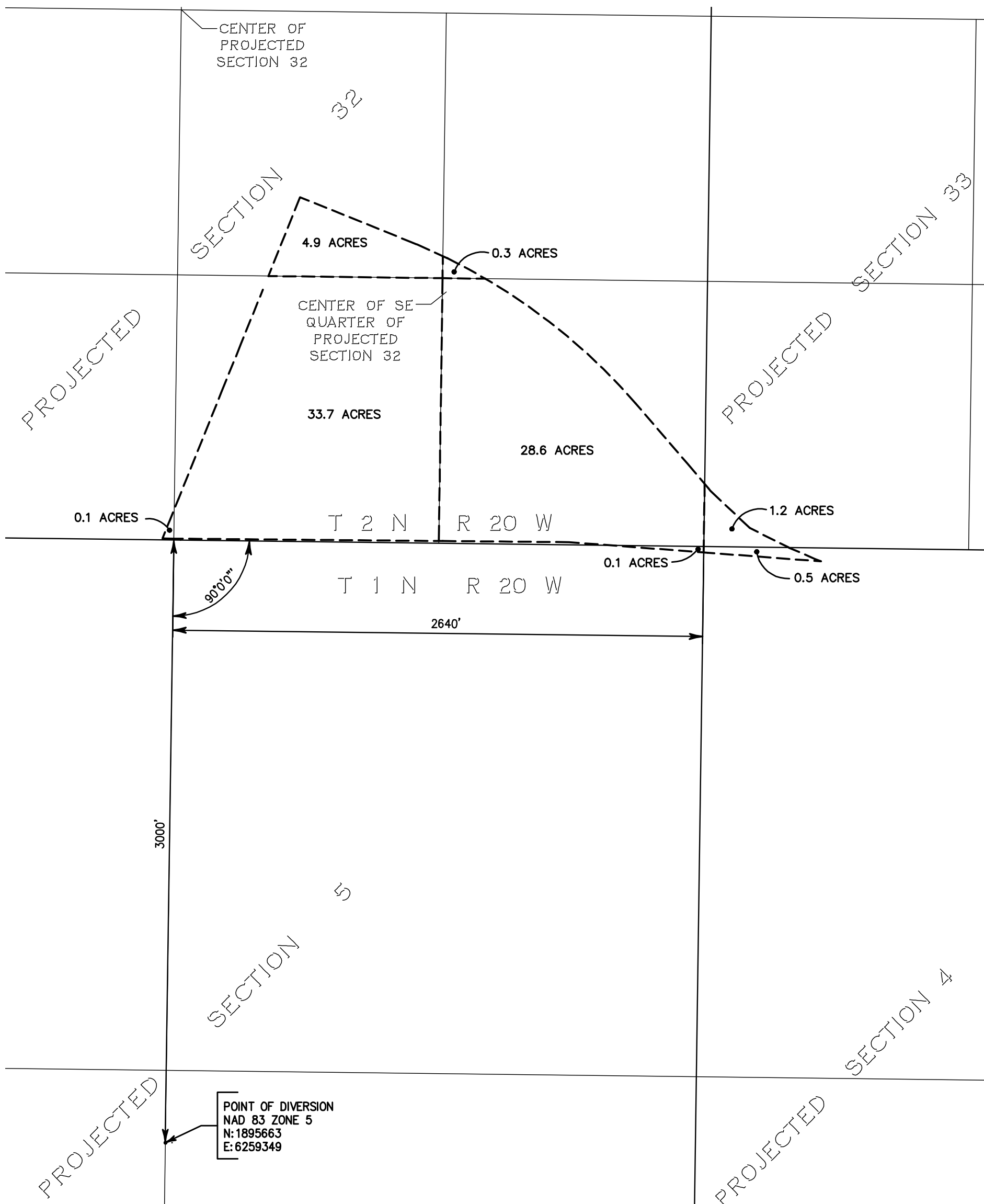


J:\DEV\34710\Survey\Exhibits\4710 SWRCB Exh.dwg Jul 13, 2010, 10:35am cbaker

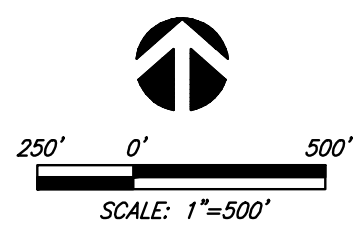


AREAS:

- 0.1 ACRES WITHIN THE SE 1/4 OF THE SW 1/4 OF PROJECTED SECTION 32
 - 33.7 ACRES WITHIN THE SW 1/4 OF THE SE 1/4 OF PROJECTED SECTION 32
 - 28.6 ACRES WITHIN THE SE 1/4 OF THE SE 1/4 OF PROJECTED SECTION 32
 - 1.2 ACRES WITHIN THE SW 1/4 OF THE SW 1/4 OF PROJECTED SECTION 33
 - 0.1 ACRES WITHIN THE NE 1/4 OF THE NE 1/4 OF PROJECTED SECTION 5
 - 0.5 ACRES WITHIN THE NW 1/4 OF THE NW 1/4 OF PROJECTED SECTION 4
 - 4.9 ACRES WITHIN THE NW 1/4 OF THE SE 1/4 OF PROJECTED SECTION 32
 - 0.3 ACRES WITHIN THE NE 1/4 OF THE SE 1/4 OF PROJECTED SECTION 32
- 69.4 ACRES TOTAL**

SITE DATA:

OWNER: TFR INVESTMENT CO., LLC
 SOURCE: CONEJO CREEK
 DIVERSION; WITHIN NW 1/4 OF THE SE 1/4 OF PROJECTED SECTION 5, TOWNSHIP 1 NORTH RANGE 20 WEST
 COUNTY: VENTURA
 USGS QUAD: NEWBURY PARK



JENSEN DESIGN & SURVEY, INC
 1672 DONLON STREET
 VENTURA, CALIF. 93003
 PHONE 805/654-6977
 FAX 805/654-6979
 www.jdscivil.com

STATE OF CALIFORNIA
STATE WATER RESOURCES CONTROL BOARD
DIVISION OF WATER RIGHTS

APPLICATION _____	SHEET 1 OF 1 <i>Jul 13, 2010</i>
PERMIT _____	
LICENSE _____	