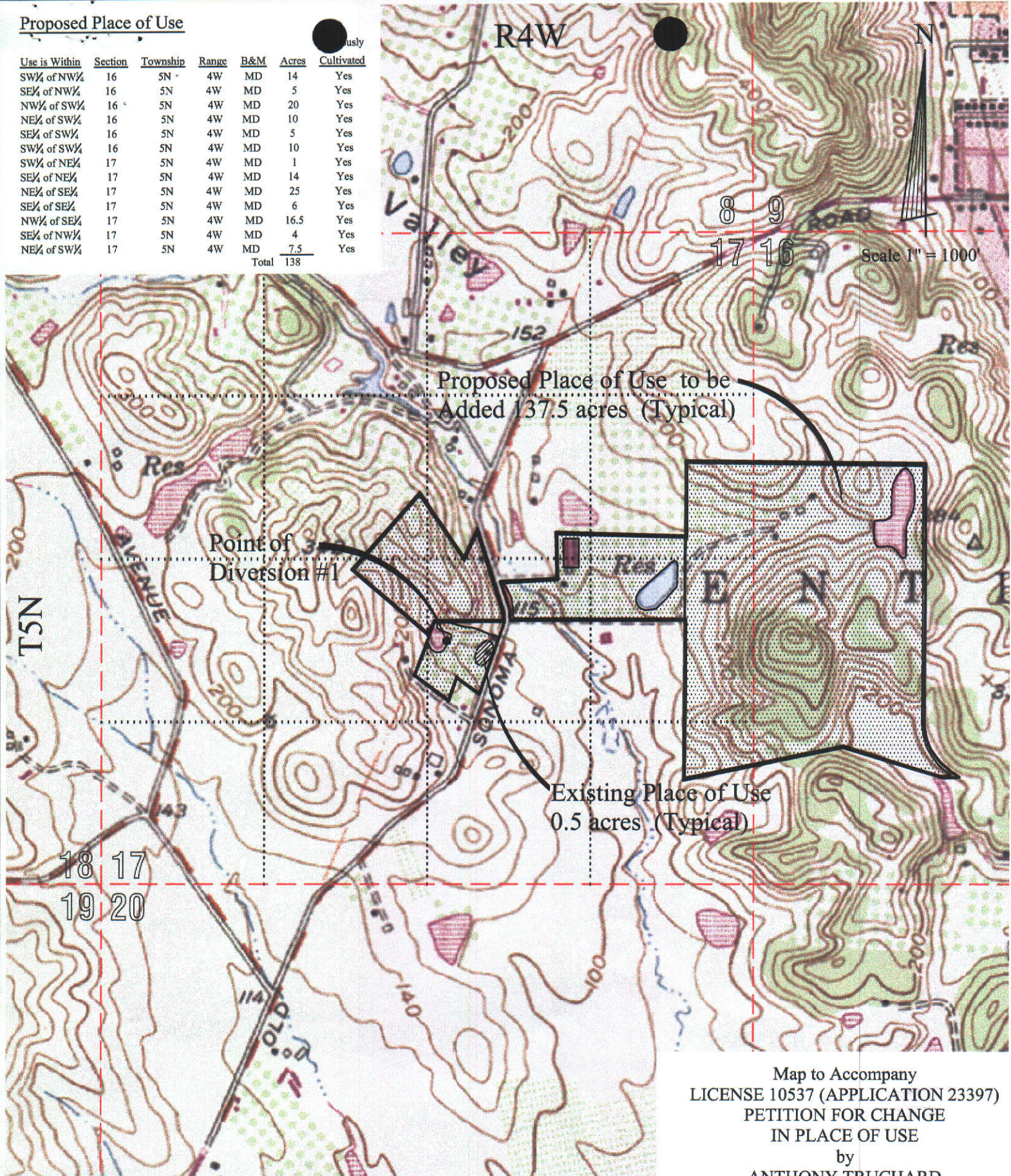


Proposed Place of Use

Use is Within	Section	Township	Range	B&M	Acres	Cultivated
SW¼ of NW¼	16	5N	4W	MD	14	Yes
SE¼ of NW¼	16	5N	4W	MD	5	Yes
NW¼ of SW¼	16	5N	4W	MD	20	Yes
NE¼ of SW¼	16	5N	4W	MD	10	Yes
SE¼ of SW¼	16	5N	4W	MD	5	Yes
SW¼ of SW¼	16	5N	4W	MD	10	Yes
SW¼ of NE¼	17	5N	4W	MD	1	Yes
SE¼ of NE¼	17	5N	4W	MD	14	Yes
NE¼ of SE¼	17	5N	4W	MD	25	Yes
SE¼ of SE¼	17	5N	4W	MD	6	Yes
NW¼ of SE¼	17	5N	4W	MD	16.5	Yes
SE¼ of NW¼	17	5N	4W	MD	4	Yes
NE¼ of SW¼	17	5N	4W	MD	7.5	Yes
Total					138	



Map to Accompany
 LICENSE 10537 (APPLICATION 23397)
 PETITION FOR CHANGE
 IN PLACE OF USE
 by
 ANTHONY TRUCHARD

Napa County, California

Wagner Bonsignore
 Consulting Civil Engineers, A Corporation

Map Point	Description
1	Point of Diversion by Collection to Storage in Reservoir #1: Located N.222,800 and E.1,906,650, California Coordinate System, Zone 2. Being within NW¼ of SE¼ of projected Section 17, T5N, R4W, MDB&M, also North 1,950 feet and West 2,500 feet from SE corner of said Projected Section 17.



Search TerraServer

Home > Image

Search input field with GO button

Navigate

View: Aerial Photo

Napa, California, United States 06 Jul 1993



1 meter resolution



Map Size: Large

- Advanced Find
- Famous Places
- Web Services
- About

Related Links:

Other Imagery:

USGS Topo Map 01 Jul 1983

House and Home:

- Homes for sale in 94558
- Homes for sale in 94559
- Schools, Crime and Demographics for 94558
- Schools, Crime and Demographics for 94559



0 100M 0

Image courtesy of the U.S. Geological Survey

Source=3812246SW Center=(-122.3243,38.2782) 0ms Running Time

TerraServer-USA Sponsors

