




# Planning Ahead is Key!

1



# Planning Ahead is Key!

- Determine Permit Applicability:
  - What is my SIC Code?
  - Is my SIC Code listed in Attachment A?
  - Do I have a discharge?....NONA
  - Do I qualify for an NEC?

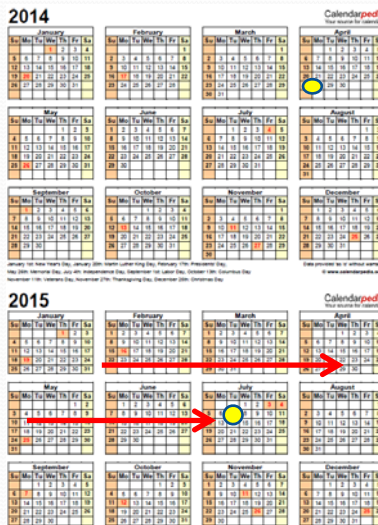
ATTACHMENT A  
FACILITIES COVERED BY NATIONAL POLLUTANT DISCHARGE ELIMINATION SYSTEM (NPDES)  
GENERAL PERMIT FOR STORM WATER DISCHARGES ASSOCIATED WITH INDUSTRIAL  
ACTIVITIES (GENERAL PERMIT)

<p><b>1. Facilities Subject To Storm Water Effluent Limitations Guidelines, New Source Performance Standards, or Toxic Pollutant Effluent Standards Found in 40 Code of Federal Regulations, Chapter 1, Subchapter J (Discharge NP)</b></p> <p>Cement Manufacturing (40 C.F.R. Part 411); Feedlots (40 C.F.R. Part 412); Furniture Manufacturing (40 C.F.R. Part 418); Petroleum Refining (40 C.F.R. Part 419); Plastics Manufacturing (40 C.F.R. Part 422); Steam Electric (40 C.F.R. Part 423); Coal Mining (40 C.F.R. Part 424); Mineral Mining and Processing (40 C.F.R. Part 436); Ore Mining and Dressing (40 C.F.R. Part 442); Asphalt Emulsion (40 C.F.R. Part 443); Landfills (40 C.F.R. Part 445); and Airport Deicing (40 C.F.R. Part 446).</p> <p><b>2. Manufacturing Facilities</b></p> <p>Facilities with Standard Industrial Classifications (SICs) 2000 through 3900, 4201 through 4205. (This category combines categories 2 and 10 of the previous general permit.)</p> <p><b>3. Oil and Gas/Mining Facilities</b></p> <p>Facilities classified as SICs 1000 through 1400, including active or inactive mining operations (except for areas of local mining operations no longer meeting the definition of a reclamation area under 40 Code of Federal Regulations 424.111) (includes the performance bond issued to the facility by the appropriate Surface Mining Control and Reclamation Act's authority has been released, or except for areas of non-coal mining operations which have been released from applicable State or Federal reclamation requirements after December 17, 1990) and oil and gas exploration, production, processing, or treatment operations, or transmission facilities that discharge storm water contaminated by contact with or that has come into contact with any overburden, raw material, intermediate products, finished products, by-products, or waste products located on the site of such operations. Inactive mining operations are mining sites that are not being actively mined, but which have an identifiable reclamation plan. Inactive mining sites do not include sites where mining claims are being maintained prior to disturbances associated with the extraction, beneficiation, or processing of mined material, or sites where mineral activities are undertaken for the sole purpose of maintaining a mining claim.</p> <p><b>4. Hazardous Waste Treatment, Storage, or Disposal Facilities</b></p> <p>Hazardous waste treatment, storage, or disposal facilities, including any facility operating under interim Order 2014-2057-DWQ</p>	<p>status or a general permit under Subtitle C of the Federal Resource, Conservation, and Recovery Act.</p> <p><b>5. Landfills, Land Application Sites, and Open Dumps</b></p> <p>Landfills, land application sites, and open dumps that receive or have received industrial waste from any facility within any other category of this Attachment, including facilities subject to regulation under Subtitle D of the Federal Resource, Conservation, and Recovery Act, and facilities that have accepted wastes from construction activities (construction activities include any clearing, grading, or excavation that results in disturbance).</p> <p><b>6. Recycling Facilities</b></p> <p>Facilities involved in the recycling of materials, including metal scrapyards, battery reclaimers, salvage yards, and automobile junkyards, including but limited to those classified as Standard Industrial Classification 5010 and 5090.</p> <p><b>7. Steam Electric Power Generation Facilities</b></p> <p>Any facility that generates steam for electric power through the combustion of coal, oil, wood, etc.</p> <p><b>8. Transportation Facilities</b></p> <p>Facilities with SICs 4000 through 4500 (except 422-25) and 5171 with vehicle maintenance shops, equipment cleaning operations, or airport deicing operations. Only those portions of the facility involve in vehicle maintenance including vehicle rehabilitation, mechanical repairs, painting, tuning, and lubrication; other operations identified under this Permit as associated with industrial activity.</p> <p><b>9. Sewage or Wastewater Treatment Works</b></p> <p>Facilities used in the storage, treatment, recycling, and reclamation of municipal or domestic sewage, including land dedicated to the disposal of sewage sludge that are located within the confines of the facility, with a design flow of one million gallons per day or more, or required to have an approved pretreatment program under 40 Code of Federal Regulations part 403. Not included are farm lands, domestic gardens, or lands used for sludge management where sludge is beneficially reused and are not physically located in the confines of the facility, or areas that are in compliance with Section 402 of the Clean Water Act.</p>
--	--

1

## Planning Ahead is Key!

- Review SWPPP
- Review historical sampling results
- Perform Level 1 ERA



## Planning Ahead is Key!

- Avoid exposure
- Avoid discharge
- Minimize number of drainage areas
- Implement minimum BMPs
- Review sampling techniques and modify, if needed
- Evaluate/eliminate pollutant sources (run on, aerial deposition)



## Planning Ahead

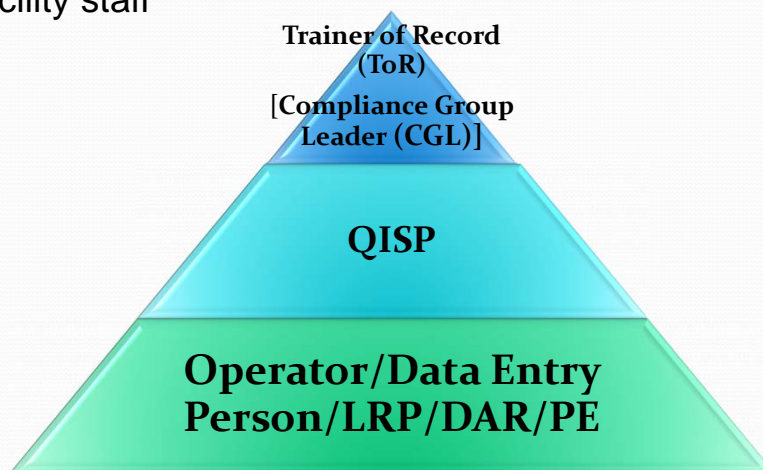
- Identify your team players:

Operator  
Legally Responsible Person (LRP)  
Duly Authorized Representative (DAR)  
Qualified Industrial Stormwater Practitioner (QISP)  
Professional Engineer (PE)  
Data Entry Person (DEP)  
Trainer of Records (ToRs)  
Compliance Group Leaders (CGLs)



## Planning Ahead

- Train facility staff



## Planning Ahead

- Get comfortable with electronic reporting

The screenshot shows the homepage of the California State Water Resources Control Board. The main heading is 'Welcome to the Storm Water Multiple Application and Report Tracking System - SMARTS!'. Below this, there is a 'SMARTS LOGIN' section with fields for 'User ID:' and 'Password:', and a 'Login' button. A red box highlights the 'Sign Up' button. To the left of the login section, there is a 'Not signed up with SMARTS yet?' section with a 'Sign Up' button. The page also features a navigation menu at the top and a sidebar with links to various resources.

7

## Planning Ahead

- Seek help!
  - Resources are available to help, not just penalize!
    - SWRCB:  
[http://waterboards.ca.gov/water\\_issues/programs/stormwater/industrial.shtml](http://waterboards.ca.gov/water_issues/programs/stormwater/industrial.shtml)
    - RWQCB-9:  
<http://www.waterboards.ca.gov/sandiego/>
    - CASQA:  
<http://www.casqa.org/>
    - SMARTS:  
<https://smarts.waterboards.ca.gov>



8


# Contacting the Board

## Storm Water Program

**Program Information**

**PROGRAMS, DATABASE & FEES**

- Caltrans: [Hot News!](#) | [Caltrans Program Page](#)
- Construction: [Hot News!](#) | [Construction Program Page](#)
- Industrial: [Hot News!](#) | [Industrial Program Page](#)
- Municipal: [Hot News!](#) | [Municipal Program Page](#)
- [SMARTS Database](#)
- [Stormwater Fees](#)



**STORM WATER FILMS**

- [Storm Water Films Page](#)

**CONTACT INFORMATION**


- General Inquiries: [stormwater@waterboards.ca.gov](mailto:stormwater@waterboards.ca.gov)
- Telephone Toll Free - 1-866-563-3107
- Fax - (916) 341-5543

**CONNECT WITH US**

- Agendas English/Espanol
- Water Quality
- Performance Report

**STORM WATER**

- Stormwater Home
- Caltrans
- Construction
- Contacts
- [Databases](#)
- [Industrial](#)



9

# Get Informed – Lyris List

[http://www.waterboards.ca.gov/water\\_issues/programs/stormwater/](http://www.waterboards.ca.gov/water_issues/programs/stormwater/)

Receive email updates on Storm Water permitting issues. [Subscribe online to our electronic mailing lists.](#)

- ▶ GENERAL INTERESTS
- ▶ DRINKING WATER
- ▶ ENFORCEMENT
- ▶ FINANCIAL ASSISTANCE (GRANTS & LOANS)
- ▶ LEGAL NOTICES - Office Of Chief Counsel
- ▶ **WATER QUALITY**
- ▶ WATER RIGHTS


- Storm Water Database Issues
- Storm Water Industrial Permitting Issues**
- Storm Water Municipal Permitting Issues

**Email List Subscription Form**

▶ Become a member of one or more of our email lists, and receive periodic announcements and updates by email.

Email Address:  (required)

Your Full Name:  (required) (e.g. John Smith)



# Questions?

Thank You!

