

1. **Annual Report**

a. Executive Report

San Benito County complied with the applicable components of the General NPDES Permit for Biological and Residual Pesticide Discharges from Vector Control Applications (General Permit). San Benito County is a member of the MVCAC NPDES Permit Coalition and the Coalition conducted all required chemical and physical monitoring. The results of the Coalition's monitoring will be included in the Coalition Annual Report that will be sent separately to the SWRCB and Regional Boards.

The San Benito County made 7 applications to the waters of the U.S. during the 2012 calendar year. The log of these applications can be found in Attachment B. The SWRCB notified the permit holders in a letter to MVCAC dated July 13, 2012 that because the visual monitoring requirements were "interfering with the need for maximal efficient application to the adequately protect human health from vector-borne diseases like West Nile Virus," that the visual monitoring was no longer required by individual districts. San Benito County continued to follow the guidelines of the Pesticide Application Plan (PAP).

b. Summary of Monitoring Data

In this first year of implementation we planned our visual monitoring work based on locations with the concentration of the greatest number of sites that peak in the late summer. Our plans sought to reduce loss of critical staff time for visual monitoring where long distance travel to emergence sites would be required, and to minimize loss of our ability to prevent emergence at the greatest number of larval habitat sites. As a result of the determination by the SWRCS to suspend visual monitoring in July to ensure that we reached as many larval sites as possible to prevent West Nile Virus (WNV), no visual monitoring occurred in 2012.

Per the instructions of the letter, the Coalition will provide information on the incidence of WNV and other similar public health threats in the Coalition's annual report. For the reasons stated above, San Benito County will no longer be collecting visual monitoring data.

c. BMP Identification

BMP's utilized by the Agency are outlined in the District's PAP. These include; emphasis on reducing mosquito breeding habitat through non-chemical means, training employees to prevent spills and applying appropriate amount of chemical in each treatment area, calibrate application equipment and use a biology based assessment for determining treatment thresholds.

d. Violation Discussion

No violations of the General Permit by the Agency were observed.

e. Map of applications

See Attachment A

f. Log of Applications made to Waters of the U.S

Attachment B includes monthly reports of all application data on the covered application areas.

g. General Information on Applications

Attachment B includes information on dosage, concentration and quantity of each pesticide used which are derived from the individual pesticide labels.

h. Visual Monitoring Data

N/A

i. PMP, PAP, Monitoring Program Recommendations

No recommendations are being proposed to improve the current BMP's, PAP, or monitoring plan. Any changes to the Coalition Monitoring Plan will be highlighted in the Coalition Monitoring Annual Report.

j. Pesticide Application Log made to Waters of the U.S.

A representation of the pesticide application log is contained in Attachment B.

2. **Updated PAP Components**

N/A

3. **Self Monitoring Reports**

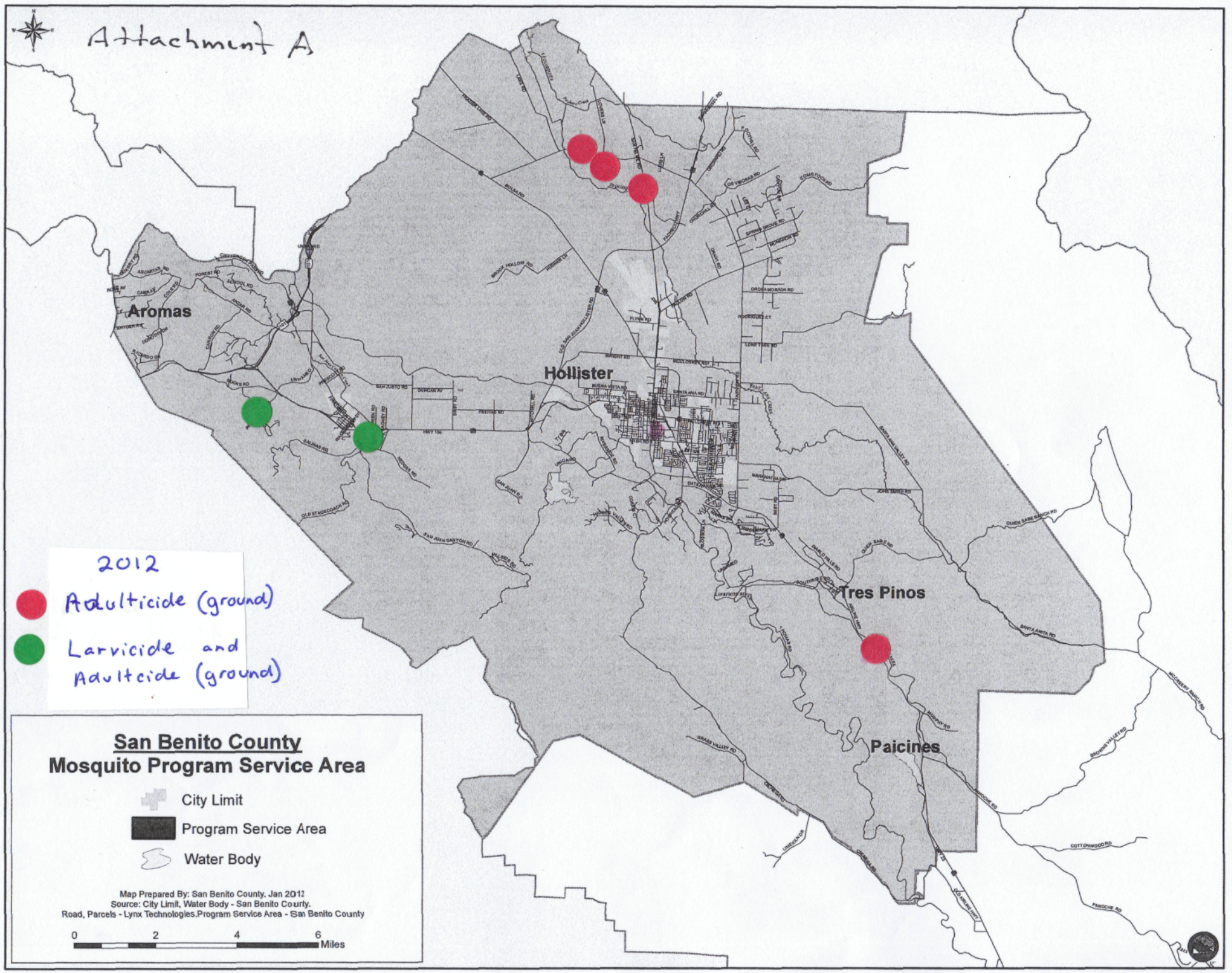
N/A

4. **Monitoring Reports**

The Coalition Monitoring Annual Report will summarize all physical measurements and chemical monitoring done for 2011 and 2012.



Attachment A






2012

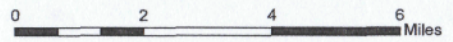
● Adulticide (ground)

● Larvicide and Adulticide (ground)

San Benito County Mosquito Program Service Area

-  City Limit
-  Program Service Area
-  Water Body

Map Prepared By: San Benito County, Jan 2012
 Source: City Limit, Water Body - San Benito County,
 Road, Parcels - Lynx Technologies, Program Service Area - San Benito County



Attachment B
San Benito County Agricultural Commissioner
2012 Application Log

Emp	Date	Time Start	Time Finish	Location	Area	Material	Amount	Latitude	Longitude	Adjacent Area
RT	Jun. 1,	9:30	11:00	Rancho Lario	4 Acres	Vetrolax CG	120 lbs	36.845286	-121.578404	Pasture
RT	Jun. 1,	9:30	11:00	Rancho Lario	4 Acres	Suspend	20 oz	36.845286	-121.578404	Pasture
RT	July 26,	19:00	21:00	Periera Dairy	7 Acres	Pyroicide 7396	1.5 Qts	36.845286	-121.578404	Pasture
RR	Aug 4,	9:00	12:00	Balado Park	.17 Acres	Suspend	10 oz	36.766936	-121.301085	Open Space
RT	Aug. 10,	14:15	15:00	Fry Ln	.05 Acres	Suspend	3 oz	35.938486	-121.42633	Open Space
RT	Aug 15,	19:30	21:00	San Felipe Rd	15.5 Acres	Pyroicide 7396	1 qt	36.935944	-121.40809	Pasture
RT	Aug. 27	9:00	12:00	Mission RV	0.03 Acre	Natular XRT	1.32 lbs.	36.82925	-121.524039	Open Space
RT	Aug. 30	8:30	11:30	Mission RV	3.3 Acres	Vetrolax CG	100 lbs	36.82925	-121.524039	Open Space
RT	Aug. 30	8:30	11:30	Mission RV	1 Acre	Suspend	5 oz	36.82925	-121.524039	Open Space
RT	Aug. 30	20:00	21:00	Mission RV	35 Acres	Pyroicide 7396	2 Qts	36.82925	-121.524039	Trees
RT	Sept. 4	19:30	21:00	Fry Ln	15.5 Acres	Suspend	1 qt	35.938486	-121.42633	Open Space
RT	Sept. 17	20:00	21:00	Fry Ln	15.5 Acres	Suspend	1 qt	35.938486	-121.42633	Open Space
RT	Sept. 17	21:00	22:00	Fry Ln	35 Acres	Pyroicide 7396	2 Qts	35.938486	-121.42633	Open Space
RT	Oct. 30	10:15	11:00	1060 San Felipe Rd	17 Acres	Suspend	8 Oz	36.842167	-121.482709	Grass, Buildings