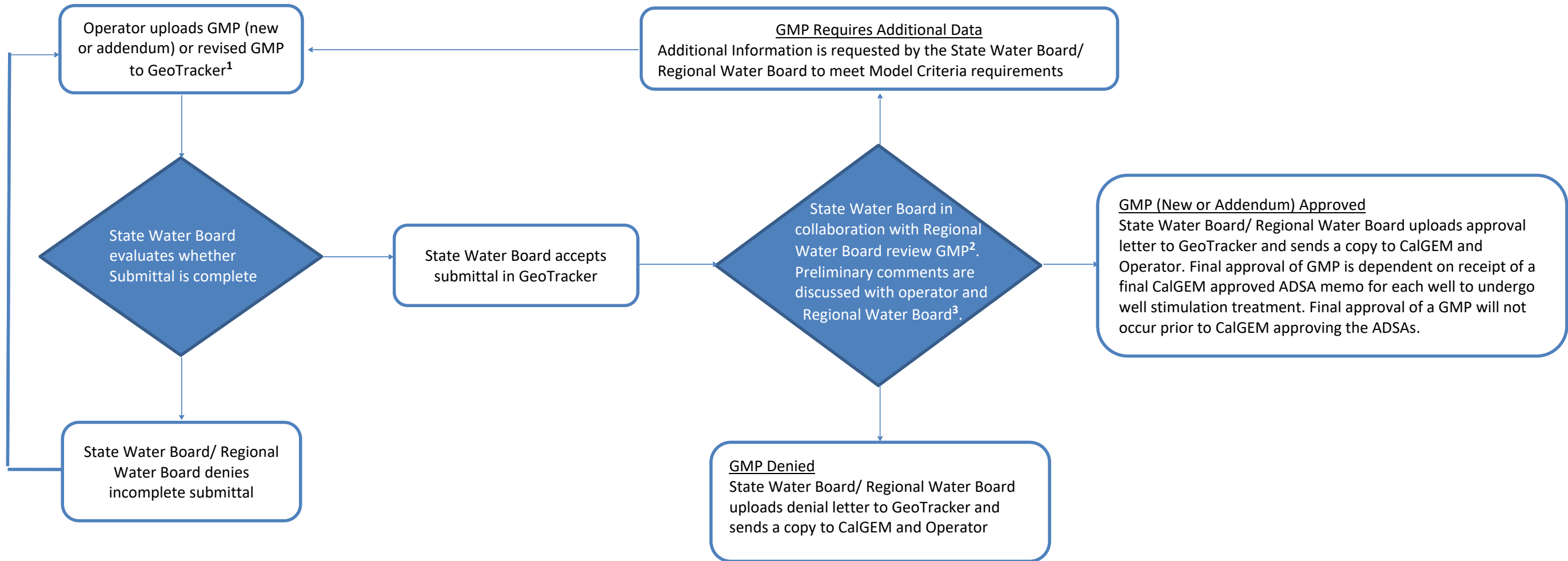


**Process Flow Chart for Uploading and Reviewing
Area-Specific Groundwater Monitoring Plans (New or Addendum)**
State Water Resources Control Board
Oil and Gas Monitoring Unit

**PROCESS FOR UPLOADING
SUBMITTAL TO GEOTRACKER**

PROCESS FOR REVIEWING SUBMITTAL



DEFINITIONS
 ADSA = Axial Dimensional Stimulation Area
 CalGEM = California Geologic Energy Management Division (formerly DOGGR)
 GMP = Groundwater Monitoring Plan
 Regional Water Board = Regional Water Quality Control Board
 State Water Board = State Water Resources Control Board

FOOTNOTES
 1. New monitoring plans, or addendums to existing monitoring plans, submitted after July 7, 2015 must follow the requirements outlined in the [Model Criteria for Groundwater Monitoring in areas of Oil and Gas Well Stimulation \(Model Criteria\)](#).
 2. It is the Water Boards goal to respond to the Operator in 45 calendar days from acceptance of a complete GMP.