

California's Surface Water Ambient Monitoring Program Response to SPARC



Scientific Planning and Review Committee (SPARC)

- 2nd Triennial Review
- 3-day meeting w/ SPARC – October
- Preliminary Report, Board Workshop – December
- Staff Response, Board Workshop – March
- 2-day meeting w/SPARC – March 21st, 22nd
- Final Report – March 31st



SPARC Recommendations

1. Reevaluate the original program goals.
2. Identify key target audiences.
3. Develop and implement a programmatic communication strategy.
4. Develop a statewide assessment framework.
5. Take more advantage of available resources.
6. Realign program management and decision making with the revised program goals.



Recommendation 1.

Reevaluate Program Goal

- Revisit 2000 Report to Legislature.
- Define role of SWAMP relative to other Board programs, and give SWAMP authority to perform this role.
- Enhance statewide assessment capability.
- Match responsibilities with funding.



Response 1.

Reevaluating program goals

- New SWAMP Priorities:
 - All Board water quality data will be comparable, high quality and Internet accessible.
 - Develop assessment framework focused on key biological indicators.
 - Partner to expand state assessments. (EPIC)

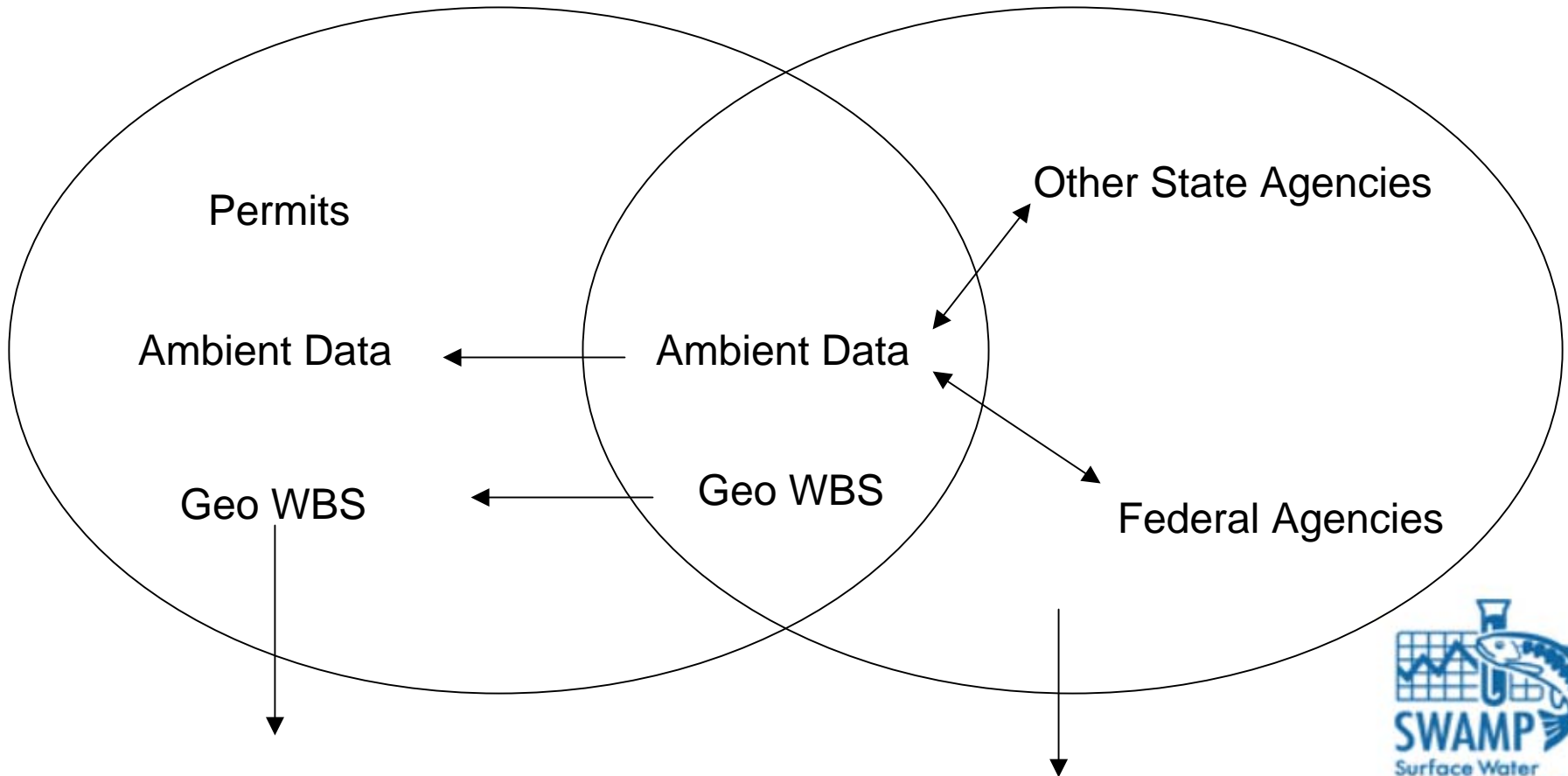


Accessible data for Board Programs and Public

CIWQS

SWAMP

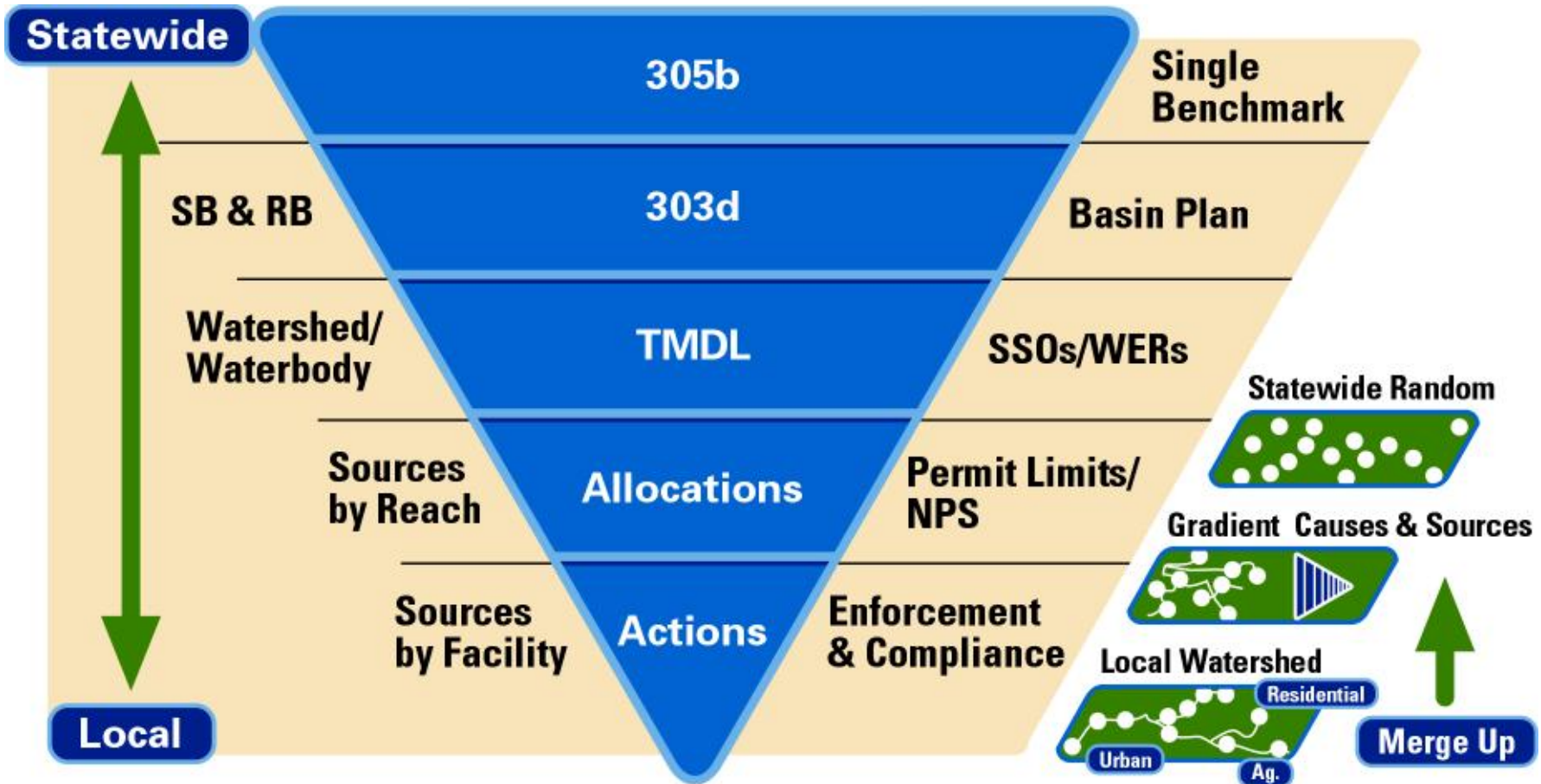
CEDEN



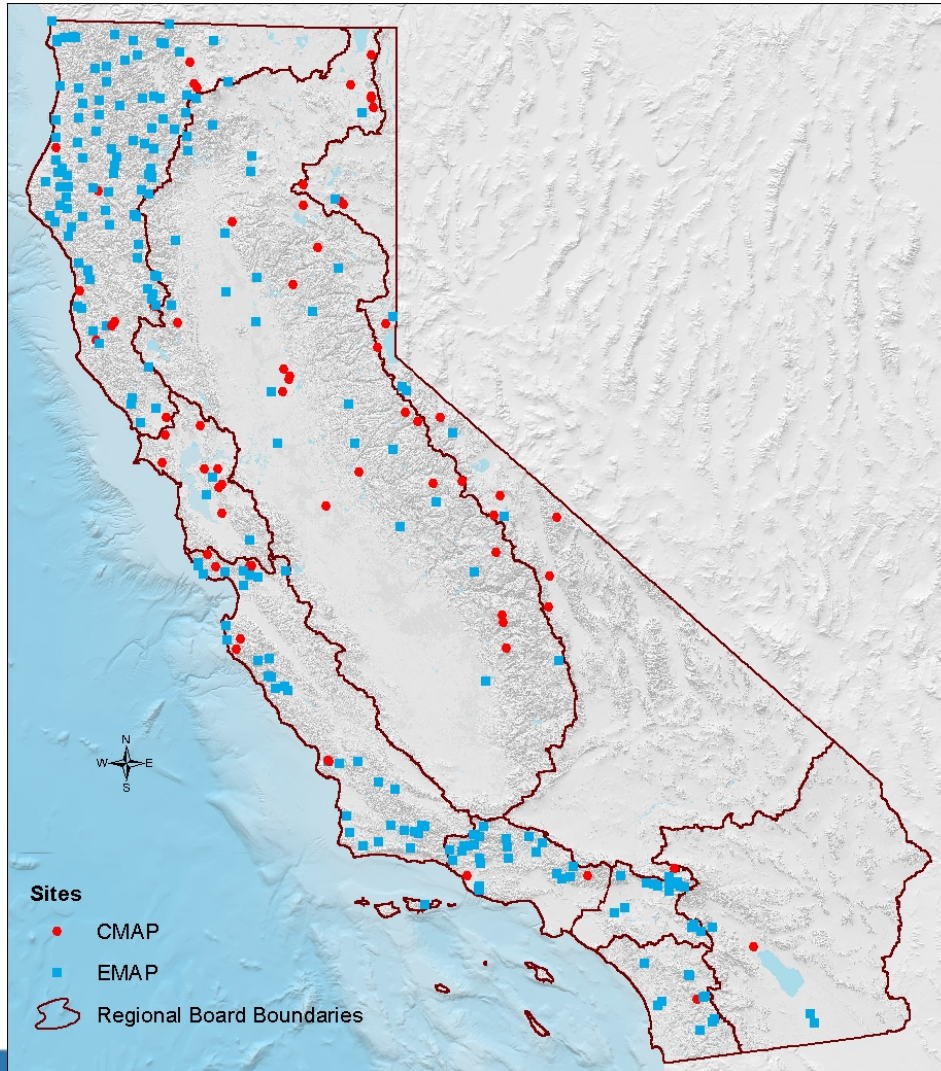
EPA's Assessment Database

EPA's STORET database





Wadable Stream Ecological Assessments



Inland surface waters
Probability-based
sampling

W-EMAP

2000-2003

Base statewide study 50
sites/year

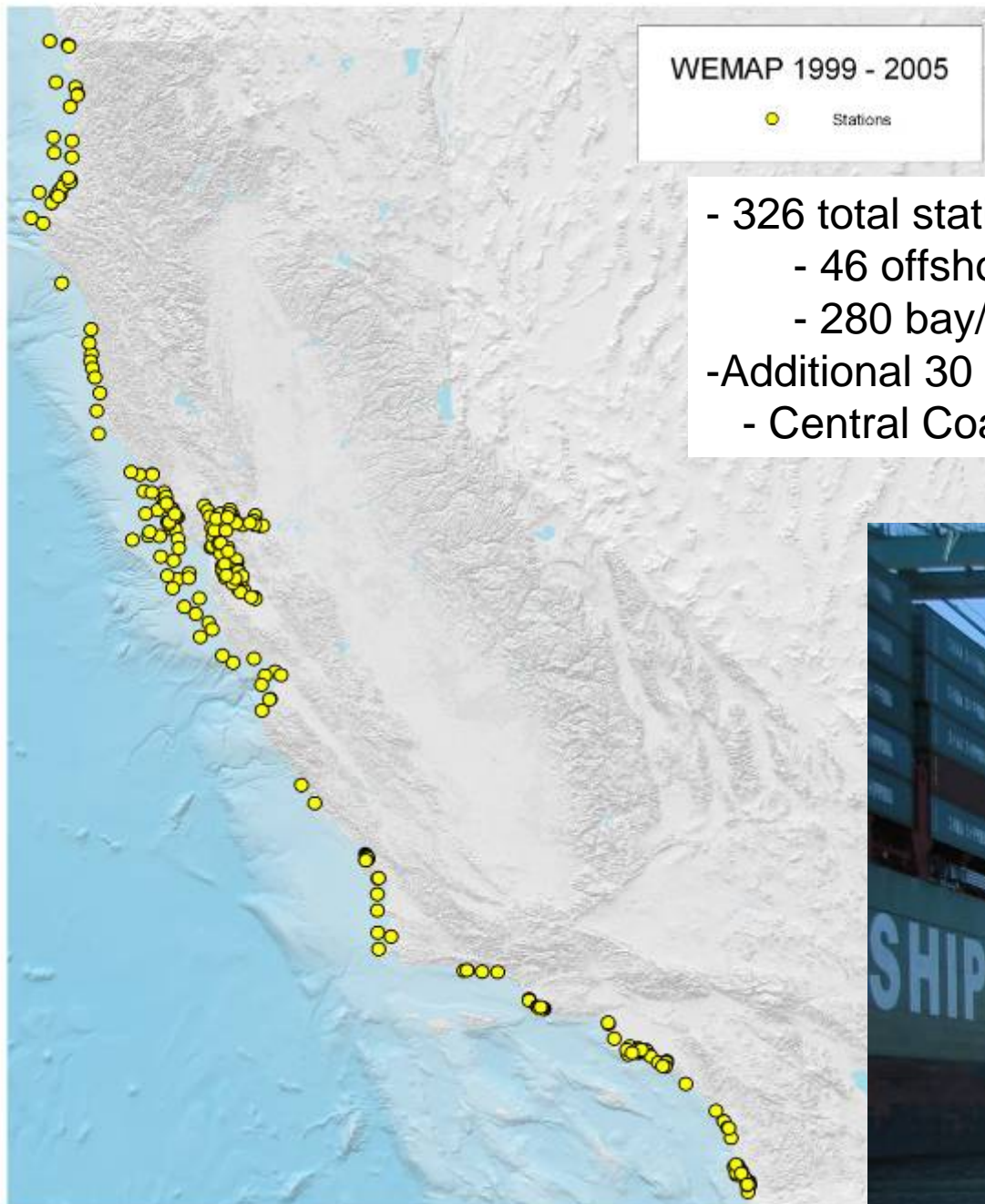
3 special study areas CA

SWAMP-NPS

Sampling initiated 2004

50 sites/year statewide

Program



- 326 total stations sampled
 - 46 offshore stations
 - 280 bay/estuary/harbor stations
- Additional 30 SWAMP stations
- Central Coast Harbor study (2004)



Recommendation 2. Identify clients

- Identify Clients for SWAMP services
- Clients with mix of local and statewide perspectives
- Assess client needs
- Take advantage of grant requirement for comparability
 - Utilize QA and data management activities to build links to SWAMP.



Response 2.

Client identification

- Clients
 - Water Board Program staff
 - Regulated Community

 - Grantees – Need help meeting requirements
 - Other agencies and monitoring entities
 - Environmental Community/Public



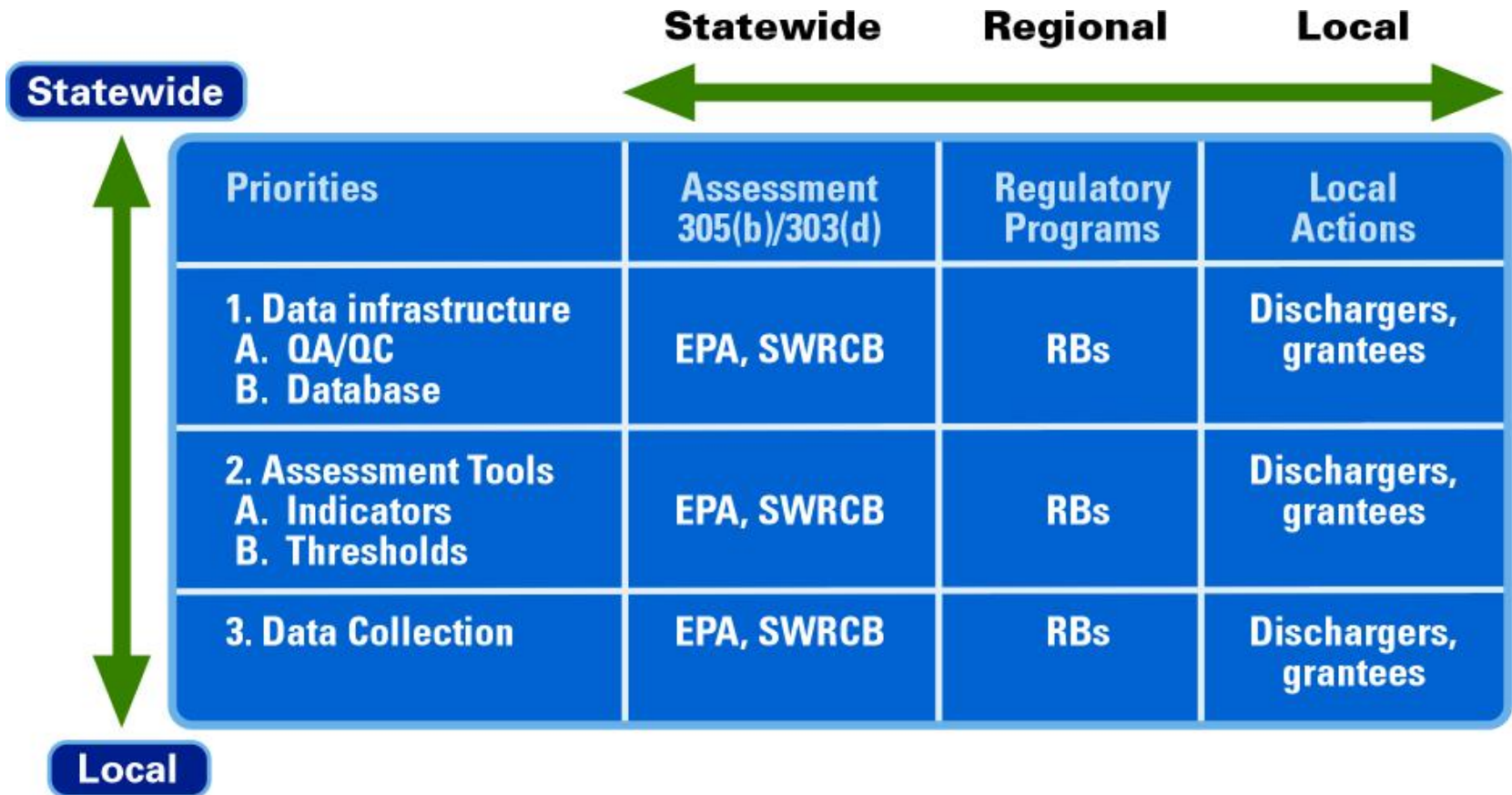
Recommendation 3.

Implement a communication strategy

- Develop communication strategy based on program goals and client needs
 - Signature products
 - Raw data to higher level syntheses and summaries
- Comprehensive analysis should use other data
- Schedule for routine production of products
- Look at mature programs for examples
 - Tailor the look
 - Target the audiences



Response 3. Linking clients to priority products



Recommendation 4.

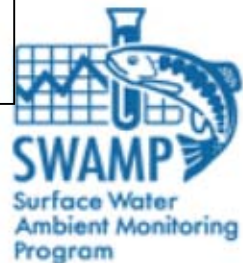
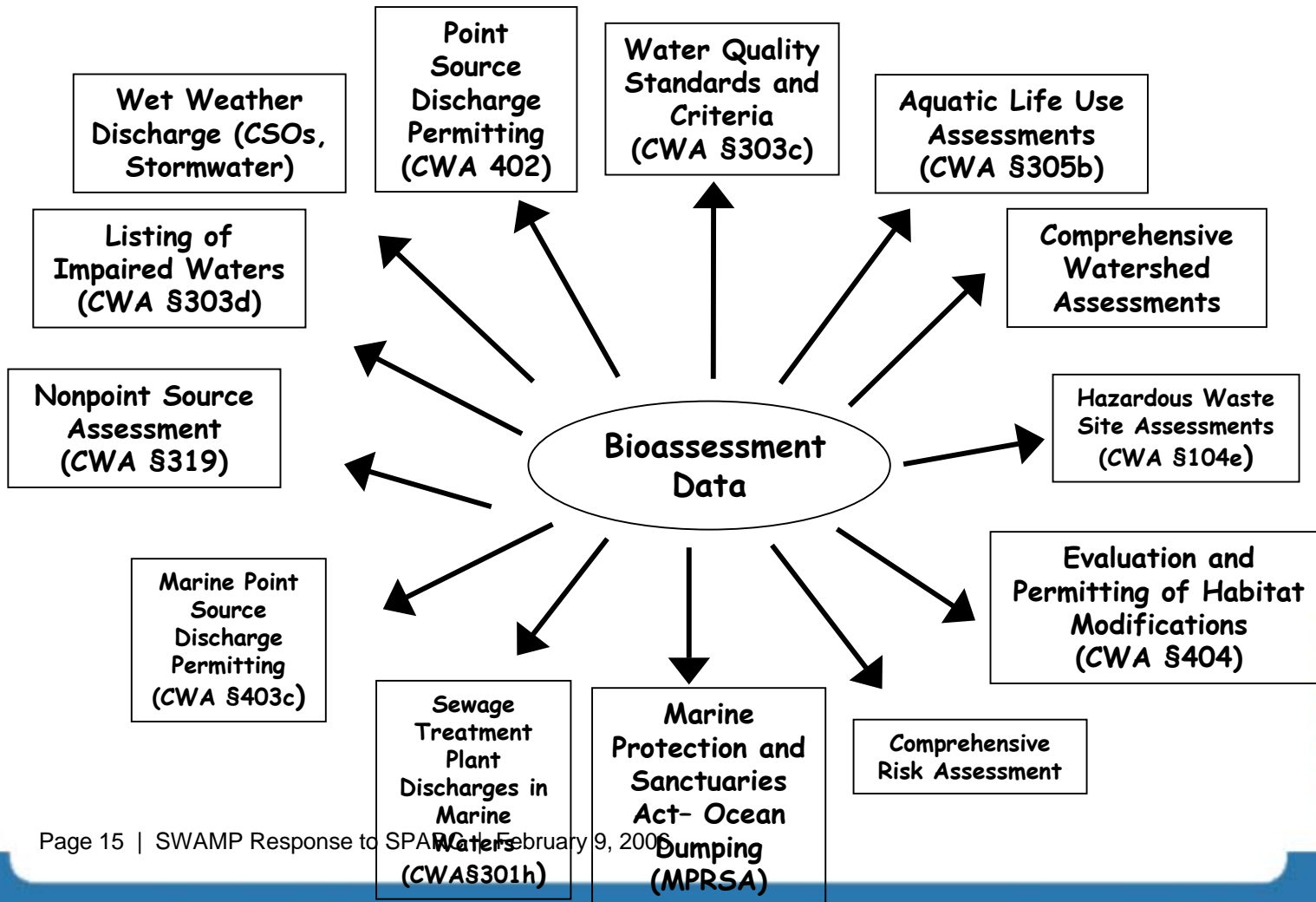
Develop statewide assessment framework

- Clients want a set of indicators which can be used to assess local condition, track trends and evaluate effectiveness of actions
 - EPA, State Board – Performance Agreements, EPIC indicators
 - Regional Board – Listings, priority setting
 - Dischargers – Compliance
 - Grantees- Did I make a difference?
 - Public – Can I Swim? Can I Fish? Are fish and wildlife protected?

- SWAMP effort focused on key indicators related to beneficial uses
 - Aquatic life use
 - Biological Assessments in fresh water
 - Sediment Quality Objectives in marine waters.



Use of Bioassessment in Water Quality Monitoring



Recommendation 5.

Take advantage of available resources

- Developing a systematic strategy at the program level (State Board, Regional Board) for coordinating with other large monitoring efforts, particularly NPS and those driven by permits.
 - NPDES and NPDES driven regional efforts (e.g. SCCWRP, SFEI)
- Implementing more consistent, stronger, and broader connections with major monitoring efforts at the local, regional and statewide level.
- SWAMP will continue working relationship with similar programs in other states and at the federal level through National Monitoring Council.



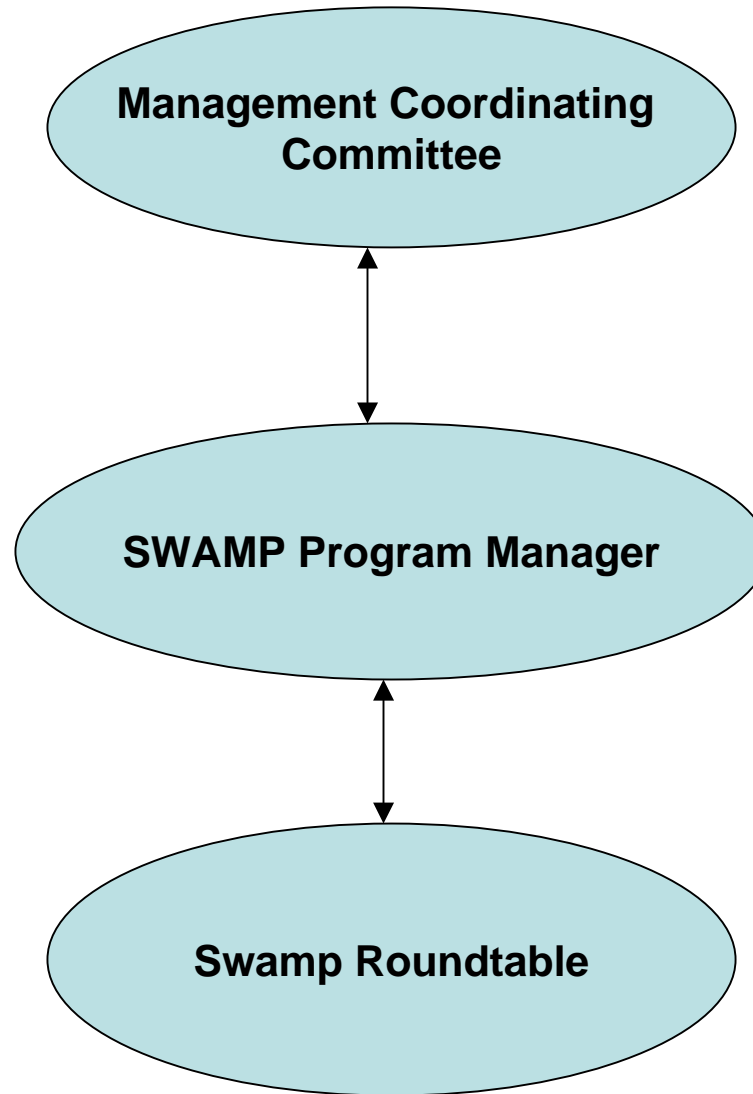
Recommendation 6.

Align management and decisions with goals

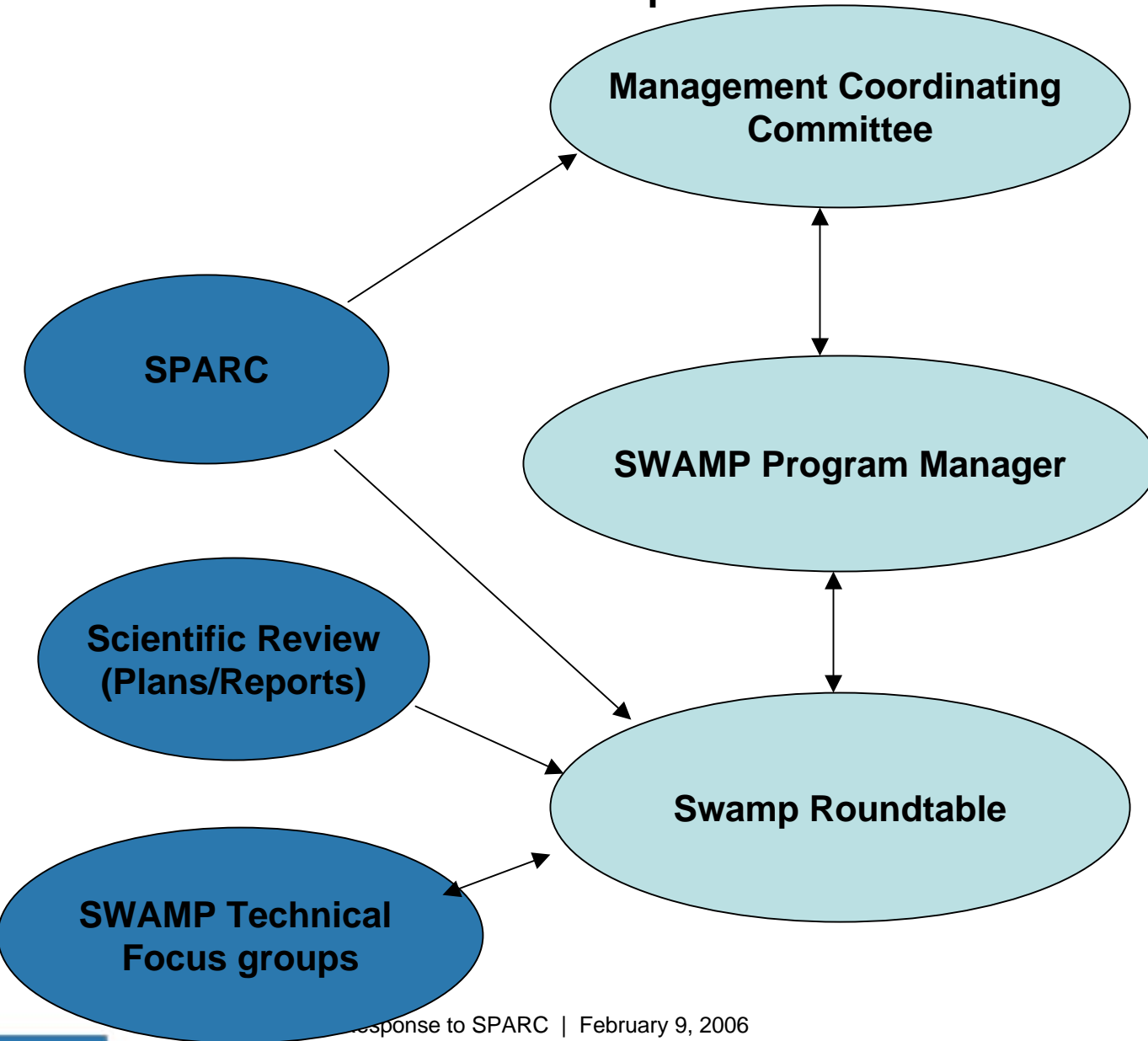
- Evaluate current management structure and decision-making relative to
 - revised program goals,
 - regulatory and monitoring efforts,
 - statewide assessment strategy
- Balance the benefits of collaborative decision making among the Roundtable with mechanisms for moving forward in the absence of consensus
- Develop a systematic decision process for setting priorities.
 - Monitoring, pilot projects, indicator development, assessment
- Develop a clearinghouse to facilitate information sharing among the regions



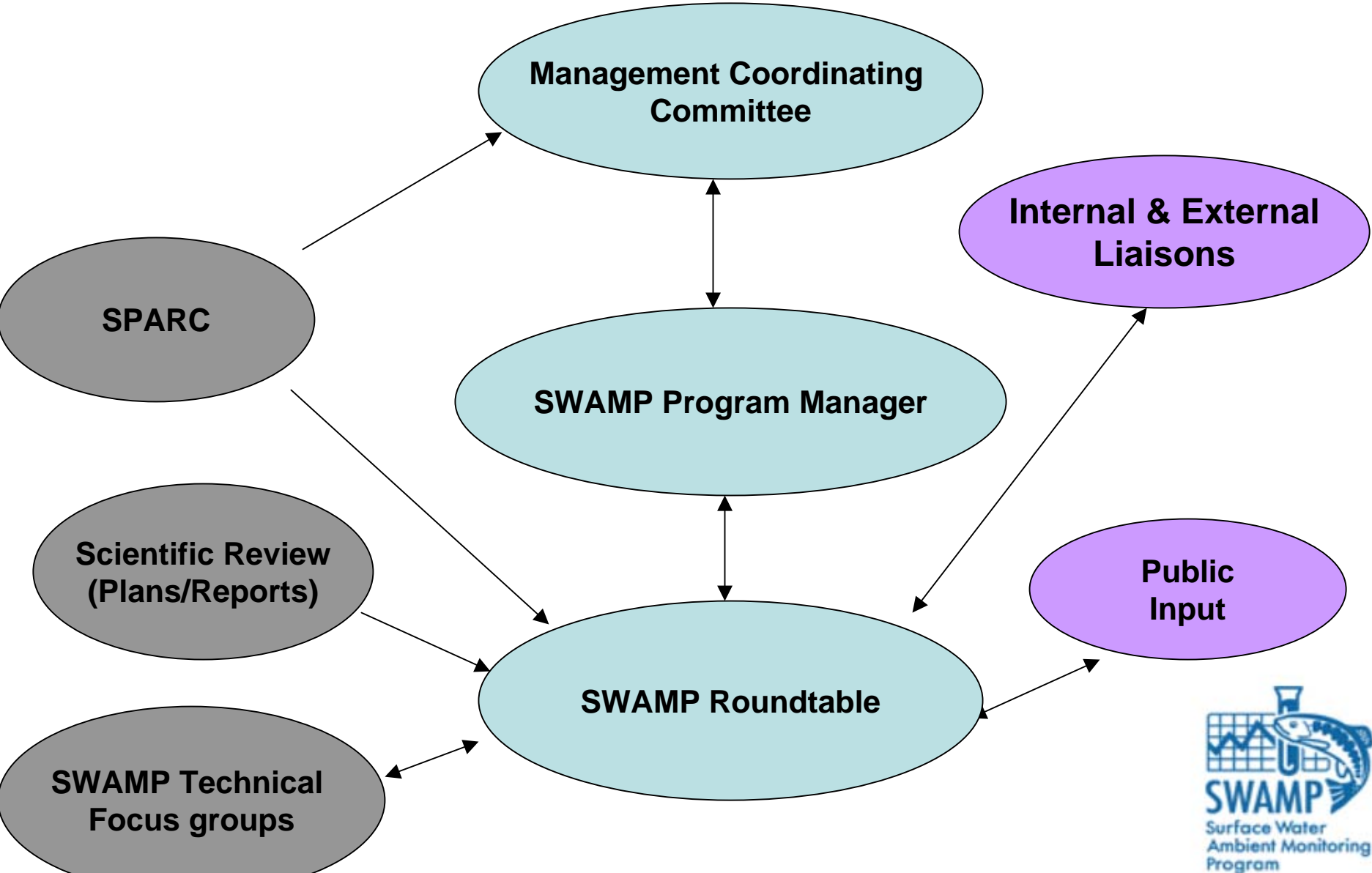
Proposed SWAMP Structure



Proposed SWAMP Structure



Proposed SWAMP Structure



Implementation Strategy

- Monitoring Program Strategy (1)
- Monitoring Objectives (4)
- Monitoring Design (4)
- Core Indicators of Water Quality (2,3)
- Quality Assurance (2,3)
- Data Management (2,3)
- Data Analysis/Assessment (2,3)
- Reporting (2,3)
- Programmatic Evaluation (5,6)
- General Support and Infrastructure (5,6)

